



UPPER MIDWEST DAIRY NEWS

H. Paul Kyburz, Market Administrator

Volume 13, Issue 3

Upper Midwest Marketing Area, Federal Order No. 30

March 2012

Inside This Issue:

Component Levels and SCC of Producer Milk 3

Computation of Producer Price Differential 4

Utilization and Classification..... 5

Commodity Prices and Market Statistics..... 6

Class Prices and Producer Prices 7



Changes in Dairy Farm Milk Marketings

The Upper Midwest Order recently released staff paper 12-01 entitled ***Changes in Dairy Farm Milk Marketings in the Upper Midwest -- 2000-2011***. The staff paper, prepared by Henry Schaefer, Chief Economist with the Upper Midwest Order, is available on our website at:

www.fmma30.com/Homepage/fo30_staff_papers.htm

The paper looks at changes in milk marketings by dairy farms located in the Upper Midwest from 2000 to 2011. Data based on dairy farmer payrolls submitted to the Upper Midwest Market Administrator for May of each of the 12 years were examined. This article summarizes major findings of the analysis.

Farm Numbers

Over the time period covered in the study, the number of farms declined from 22,537 to 15,676, a 30% decline. The three smallest size categories were the only size categories to show a net loss in farm numbers, with most of the loss of farms occurring in the two smallest categories. Each of the other seven size categories had a net increase in farm numbers.

The largest decline in farm numbers over the 2000-2011 time period was in the 50,000-99,999 pounds per month size category, while the largest increase was in the 250,000-399,999 pounds per month category. (See Figure 1 on page 2.)

Milk Marketings

In May 2000, 2.6 billion pounds of milk were marketed by 22,537 farms, whereas in May 2011, 3.4 billion pounds of milk was produced by 15,676 farms, a 29% increase in milk production by 6,861 fewer farms.

During that time period, the average production per farm increased from 115,145 pounds to 214,357 pounds, an 86% increase. Surprisingly, not all of the size categories had an increase in the average production per farm. The <50,000 pounds per month and 600,000-999,999 pounds per month categories were the only two categories that had a decrease in the average per farm marketings. As a percentage of total marketings, the three smallest size categories declined while the remainder of the size categories had an increasing share of total marketings. (See Figure 2 on page 2.)

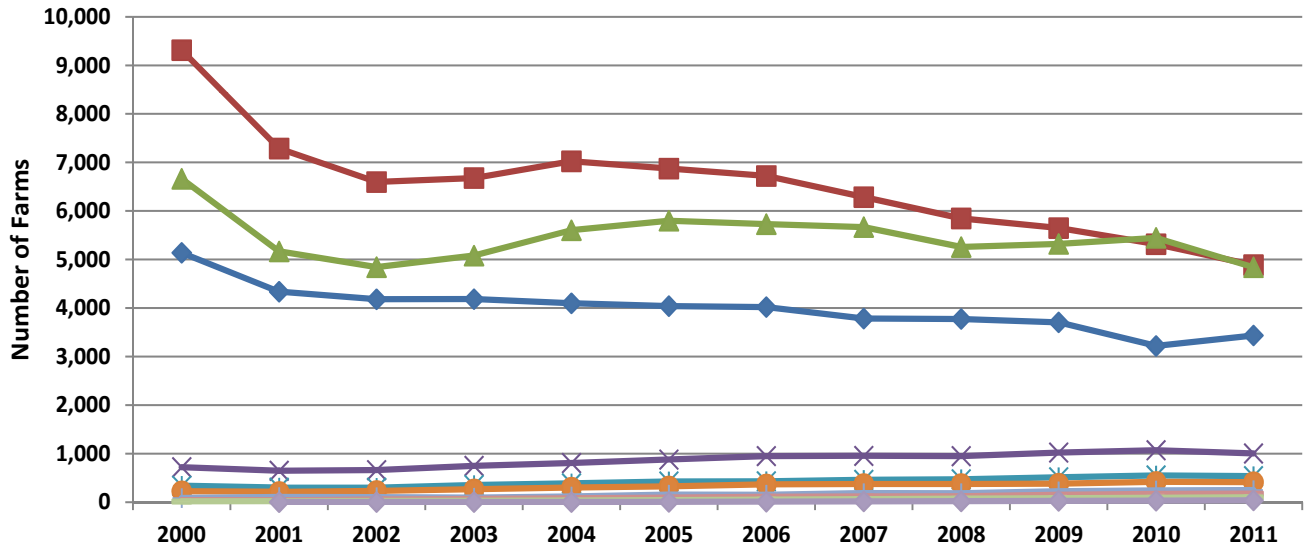
Pool Summary

- In February, producer milk totaled 2.7 billion pounds, down 165 million pounds from January, but 132 million pounds above February 2011.
- Class I utilization totaled 308 million pounds, down 1.2% from January on a daily basis. Class I usage accounted for 11.4% of producer milk.
- Class III utilization totaled 2.3 billion pounds and accounted for 83.4% of producer milk.
- The February Producer Price Differential (PPD) was \$0.29 per cwt.
- The Statistical Uniform Price was \$16.35 per cwt., down \$1.09 from January and \$0.88 below February 2011.
- Market statistics for February are shown on Pages 4 and 5.

February 2012 Producer Milk by Class

	Percent	Product Pounds	Price \$/cwt.
Class I	11.4	308,346,459	18.83
Class II	2.3	62,297,726	16.94
Class III	83.4	2,259,058,935	16.06
Class IV	2.9	79,838,672	15.92
Total		2,709,541,792	

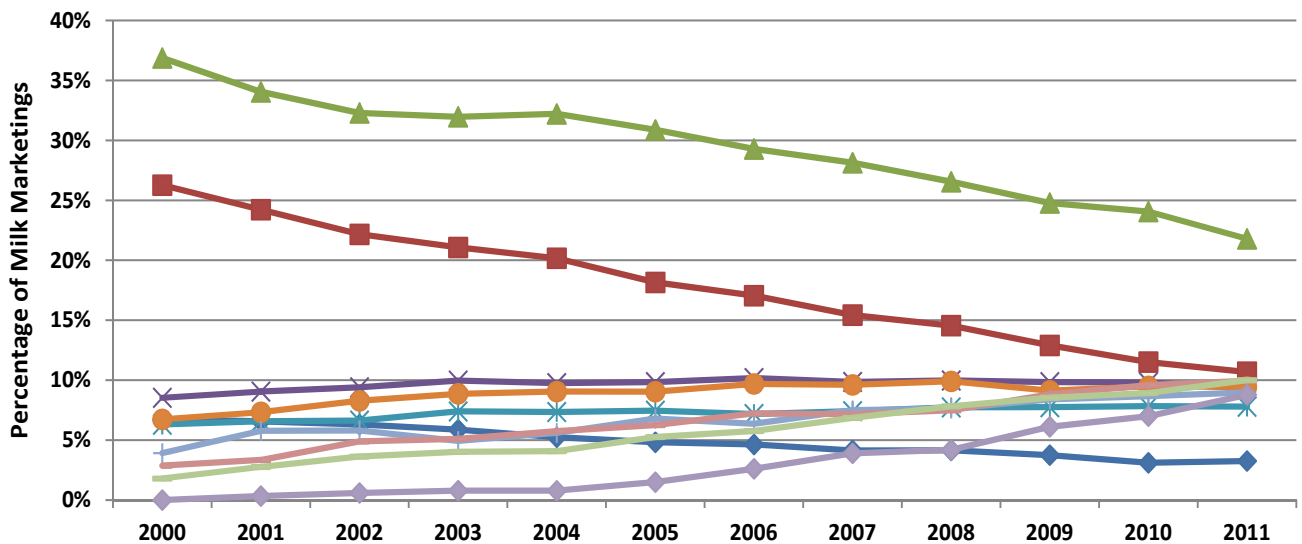
Figure 1
Number of Farms by Size Category



Size Category (In Pounds)

- ◆ a. <50,000
- ◆ b. 50,000-99,999
- ◆ c. 100,000-249,999
- ◆ d. 250,000-399,999
- ◆ e. 400,000-599,999
- ◆ f. 600,000-999,999
- ◆ g. 1,000,000-1,499,999
- ◆ h. 1,500,000-2,499,999
- ◆ i. 2,500,000-4,999,999
- ◆ j. >=5,000,000

Figure 2
Percentage of Total Milk Marketings by Size Category



Size Category (In Pounds)

- ◆ a. <50,000
- ◆ b. 50,000-99,999
- ◆ c. 100,000-249,999
- ◆ d. 250,000-399,999
- ◆ e. 400,000-599,999
- ◆ f. 600,000-999,999
- ◆ g. 1,000,000-1,499,999
- ◆ h. 1,500,000-2,499,999
- ◆ i. 2,500,000-4,999,999
- ◆ j. >=5,000,000

Component Levels and SCC of Producer Milk

The Upper Midwest Order recently released staff paper 12-02 entitled *Analysis of Component Levels and Somatic Cell Count in Individual Herd Milk at the Farm Level -- 2010*. The staff paper, prepared by Dr. Corey Freije, an agricultural economist with the Upper Midwest Order, is available on our website at:

www.fmma30.com/Homepage/fo30_staff_papers.htm

Data on the butterfat, protein, other solids and solids-not-fat (snf) levels and somatic cell count (scc) were examined for producer milk associated with the Upper Midwest Order during 2010.

Major Findings

- 1) Weighted average component levels and scc for 2010 were 3.67% butterfat, 3.03% protein, 5.76% other solids, 8.79% snf and 257,000 scc.
- 2) For 2010, weighted average butterfat, protein and snf levels were lowest in July and highest during November and December. In contrast, other solids levels varied little during the year. Somatic cell counts peaked in the warm summer months and reached a low point in November.
- 3) In 2010, the ranges of component levels within one standard deviation of the weighted average were: 3.38% to 3.96% for butterfat; 2.87% to 3.19% for protein; 5.67% to 5.85% for other solids; 8.61% to 8.97% for snf; and 134,000 to 380,000 for scc.
- 4) Larger producers tended to have lower butterfat and protein tests and lower scc than did smaller producers.
- 5) Of the states that are wholly or partially located in the Upper Midwest Marketing area, Michigan Upper Peninsula had the highest weighted average butterfat test, and South Dakota had the highest weighted average protein test. North Dakota had the highest weighted average other solids and snf tests. Wisconsin had the lowest scc, while North Dakota had the highest scc.
- 6) The annual weighted average value of butterfat, protein, and other solids, adjusted for scc, was \$14.86 per cwt. for the market in 2010, with protein contributing \$6.98 and butterfat \$6.79.

Weighted Average Levels of Selected Components and Somatic Cell Count in Milk by Month

2010

<u>Month</u>	<u>Butterfat</u>	<u>Protein</u>	<u>Other Solids</u>	<u>Solids Not-Fat</u>	<u>Somatic Cell Count</u>
	- % -	- % -	- % -	- % -	- 1,000 -
January	3.76	3.09	5.74	8.84	256
February	3.73	3.06	5.75	8.82	255
March	3.68	3.02	5.77	8.79	254
April	3.64	2.99	5.77	8.76	248
May	3.61	2.98	5.76	8.75	245
June	3.55	2.94	5.78	8.72	268
July	3.52	2.91	5.76	8.67	285
August	3.53	2.92	5.76	8.68	297
September	3.64	3.03	5.76	8.79	276
October	3.74	3.11	5.75	8.86	243
November	3.83	3.14	5.75	8.89	228
December	3.86	3.13	5.75	8.89	232
Minimum	3.52	2.91	5.74	8.67	228
Maximum	3.86	3.14	5.78	8.89	297
Annual Average	3.67	3.03	5.76	8.79	257

Computation of Producer Price Differential-February 2012

	Utilization Percentage	Product Pounds	Component Pounds	Rate	Value
Class I					
Differential Value					\$ 5,360,920.71
Product	11.4%	308,346,459			
Skim Milk			304,070,807	\$11.4200	34,724,886.17
Butterfat			4,275,652	1.7170	7,341,294.49
Class II					
Product	2.3%	62,297,726			
Nonfat Solids			5,107,887	1.3133	6,708,188.00
Butterfat			7,145,149	1.5809	11,295,766.05
Class III					
Product	83.4%	2,259,058,935			
Protein			70,638,458	2.6627	188,089,022.11
Other Solids			130,422,593	0.4541	59,224,899.49
Butterfat			81,258,656	1.5739	127,892,998.68
Class IV					
Product	2.9%	79,838,672			
Nonfat Solids			6,372,208	1.1993	7,642,189.07
Butterfat			10,918,845	1.5739	17,185,170.16
SCC Adjustment (Class II, III, and IV)					2,496,404.18
Total Producer Milk *		2,709,541,792			\$467,961,739.11
Add:					
Overage					18,860.42
Inventory Reclassified					(7,014.15)
Other Source Milk \$.60(h)					0.00
Other Source Milk \$.60(i)		449,017			11,539.74
Subtract:					
Transportation Credit					32,257.00
Assembly Credit					245,685.76
Credit for Reconstituted FMP					0.00
Producer Milk Protein					225,127,085.92
Producer Milk Other Solids					70,857,837.14
Producer Milk Butterfat					163,053,367.55
Producer Milk SCC Adjustment					2,841,405.79
Total Milk and Value		2,709,990,809			\$ 5,827,485.96
Add:					
Location Adjustment -- Producer and Unregulated Supply Plant Milk					2,112,331.24
One-Half Unobligated Balance Producer Settlement Fund					1,238,239.65
Total Value				0.338675	\$ 9,178,056.85
Subtract:					
Producer Settlement Fund Reserve				0.048675	1,319,083.50
Producer Price Differential **				\$0.29	\$ 7,858,973.35

* An estimated 106 million pounds of milk was not pooled.

** Producer Price Differential is dollars per cwt. at the Base Zone of Cook County, Illinois.

Upper Midwest Pool Statistics - February 2012

Market Class I Differential Rate	Pool Plants	Received at Pool Plants	Diverted to Pool and Nonpool Plants	Total	Location Adjustment to Producers	Class I Differential to Handlers	
Cwt.	Number	Pounds	Pounds	Pounds	Value	Pounds	Value
\$1.80	3	79,816,287	15,541,937	95,358,224	\$ 0	81,532,363	\$1,467,582
\$1.75	34	134,603,449	962,645,874	1,097,249,323	548,625	93,199,406	1,630,990
\$1.70	28	210,461,390	1,214,724,649	1,425,186,039	1,425,186	115,412,277	1,962,009
\$1.65	4	22,462,517	69,285,689	91,748,206	137,622	18,202,413	300,340
Total	69	447,343,643	2,262,198,149	2,709,541,792	\$2,111,433	308,346,459	\$5,360,921

Utilization and Classification of Milk

	February 2012		January 2012	February 2011
	Product Pounds	Butterfat Pounds	Product Pounds	Product Pounds
Class I Utilization:				
Packaged Disposition				
Milk	37,719,615	1,238,525	41,614,593	42,167,740
Flavored Milk	2,187,384	68,249	2,169,243	3,033,232
Reduced Fat Milk	107,338,063	2,075,000	116,971,333	121,809,374
Lowfat Milk	54,583,271	518,795	59,727,293	55,557,186
Fat Free Milk	72,098,141	66,584	78,366,781	81,713,366
Flavored Reduced and Fat Free Milk	33,143,292	217,990	33,668,200	34,952,799
Buttermilk	2,625,318	36,593	2,501,185	2,427,954
Total Packaged Disposition	309,695,084	4,221,736	335,018,628	341,661,651
Total Ending Inventory	21,367,364	287,433	21,404,027	30,015,617
Bulk to Nonpool Plants	1,646,246	27,157	1,200,349	1,479,958
Shrinkage	1,272,749	74,128	1,779,857	1,666,896
Total Class I Utilization	333,981,443	4,610,454	359,402,861	374,824,122
Other Order Plants	(3,063,213)	(46,664)	(3,345,511)	(2,947,545)
Beginning Inventory	(22,005,012)	(286,293)	(22,016,105)	(30,874,982)
Reused Products	0	0	0	0
Other Source Milk	(508,504)	(810)	--	0
Overage	--	--	0	0
Interhandler Adjustment	(58,255)	(1,035)	(473,158)	124,791
Class I Producer Milk	308,346,459	4,275,652	333,568,087	341,126,386
Class II Utilization:				
Total Class II Utilization	72,713,169	7,367,513	95,592,495	62,014,996
Other Order Plants	0	0	0	--
Beginning Inventory	(1,786,482)	(183,241)	(819,554)	(3,775,737)
Reused Products	(8,594,834)	(4,996)	(8,386,164)	(11,107,989)
Other Source Milk	(34,127)	(34,127)	(243,921)	(11,330)
Overage	0	0	--	0
Class II Producer Milk	62,297,726	7,145,149	86,142,856	47,119,940
Class III Utilization:				
Total Class III Utilization	2,265,425,038	81,362,052	2,362,368,699	2,176,183,089
Other Order Plants	(3,360,428)	(29,350)	(2,563,772)	(1,720,062)
Beginning Inventory	(2,310,410)	(43,885)	(1,548,527)	(4,939,518)
Reused Products	0	0	0	0
Other Source Milk	(614,211)	(24,528)	(545,228)	(1,422,763)
Overage	(81,054)	(5,633)	(82,604)	(40,545)
Class III Producer Milk	2,259,058,935	81,258,656	2,357,628,568	2,168,060,201
Class IV Utilization:				
Total Class IV Utilization	174,647,797	14,909,701	181,617,161	69,500,946
Other Order Plants	(5,537,413)	(306,743)	(3,804,536)	(5,517,255)
Beginning Inventory	(18,715,670)	(937,246)	(20,875,003)	(16,061,910)
Reused Products	0	0	0	0
Other Source Milk	(70,553,711)	(2,745,888)	(59,518,735)	(26,576,485)
Overage	(2,331)	(979)	(97,267)	(10,942)
Class IV Producer Milk	79,838,672	10,918,845	97,321,620	21,334,354
Total Producer Milk -- All Classes	2,709,541,792	103,598,302	2,874,661,131	2,577,640,881

-- Restricted Information

Commodity Prices

Month/Year	Weighted Monthly Average NASS Prices *						Weighted Two-Week Average NASS Prices *					
	Cheddar Cheese			Nonfat			Cheddar Cheese			Nonfat		
	Blocks	Barrels	Average	Butter	Dry Milk	Dry Whey	Blocks	Barrels	Average	Butter	Dry Milk	Dry Whey
	<i>Dollars per Pound</i>						<i>Dollars per Pound</i>					
Feb 2011	1.7228	1.7399	1.7449	2.0680	1.3728	0.4234	1.6092	1.6404	1.6386	2.0820	1.3467	0.4146
Mar	1.9633	1.9534	1.9722	2.0591	1.4945	0.4578	1.9644	1.9558	1.9735	2.0363	1.4733	0.4618
Apr	1.6888	1.6804	1.6983	1.9975	1.5680	0.4808	1.6690	1.6564	1.6768	1.9869	1.5698	0.4775
May	1.6309	1.6490	1.6534	2.0292	1.6120	0.4929	1.6222	1.6332	1.6413	2.0460	1.6065	0.4915
Jun	1.8640	1.9139	1.8999	2.1287	1.6520	0.5233	1.7523	1.8115	1.7934	2.1343	1.6462	0.5201
Jul	2.1087	2.1145	2.1243	2.0304	1.6159	0.5494	2.1226	2.1126	2.1308	2.0291	1.6571	0.5470
Aug	2.1206	2.1358	2.1402	2.0695	1.5739	0.5691	2.1283	2.1582	2.1529	2.0852	1.5804	0.5639
Sep	1.8755	1.8127	1.8592	1.9886	1.5439	0.5926	1.8465	1.7924	1.8347	1.9893	1.5461	0.5900
Oct	1.7391	1.7269	1.7471	1.7893	1.5109	0.6152	1.7425	1.7151	1.7437	1.7552	1.5328	0.6121
Nov	1.8006	1.8615	1.8415	1.7824	1.4522	0.6380	1.7464	1.7877	1.7788	1.8388	1.4783	0.6342
Dec	1.8038	1.7806	1.8070	1.6119	1.4201	0.6538	1.8140	1.7762	1.8102	1.6079	1.4419	0.6549
Jan 2012	1.5910	1.6006	1.6097	1.5900	1.3942	0.6876	1.5767	1.6059	1.6052	1.5893	1.4155	0.6915
Feb	1.5230	1.5279	1.5410	1.4712	1.3792	0.6400	1.5450	1.5349	1.5553	1.5220	1.3930	0.6531

Month/Year	Chicago Mercantile Exchange						
	Butter	Cheddar Cheese		Nonfat Dry Milk (Low/Medium Heat)		Whey Powder	
	Grade AA	Blocks	Barrels	Central & East	West	Central	West
	<i>Dollars per Pound</i>						
Feb 2011	2.0622	1.9064	1.8680	1.6012	1.5382	0.4138	0.4914
Mar	2.0863	1.8125	1.8049	1.6607	1.5735	0.4718	0.5147
Apr	1.9970	1.6036	1.5756	1.6505	1.5764	0.4588	0.5210
May	2.0724	1.6858	1.6902	1.6562	1.6056	0.4905	0.5180
Jun	2.1077	2.0995	2.0483	1.6786	1.6490	0.5149	0.5445
Jul	2.0443	2.1150	2.1124	1.6350	1.6253	0.5409	0.5735
Aug	2.0882	1.9725	1.9571	1.5632	1.5185	0.5543	0.5843
Sep	1.8724	1.7561	1.7010	1.5385	1.4947	0.5823	0.5985
Oct	1.8295	1.7231	1.7192	1.5023	1.4641	0.6069	0.6019
Nov	1.7356	1.8716	1.8963	1.4726	1.4331	0.6259	0.6096
Dec	1.6119	1.6170	1.5839	1.4519	1.4099	0.6509	0.6565
Jan 2012	1.5831	1.5546	1.5358	1.4344	1.3670	0.7160	0.6954
Feb	1.4273	1.4793	1.4823	1.3760	1.3376	0.6672	0.5836

Market Statistics

Month/Year	Distributing Plants	Supply Plants	Coop .9(c) Handlers	Producers	Total Producer Milk	Est. Average Daily Delivery Per Producer	Class I Utilization	Butterfat Test	Protein Test	Other Solids Test	Weighted Average SCC
					Mil. lbs.	Pounds	Percent	Percent	Percent	Percent	
										(000)	
Feb 2011	21	50	13	14,664	2,578	6,277	13.3	3.79	3.09	5.74	242
Mar	23	49	13	13,348	2,611	6,307	14.2	3.76	3.07	5.75	236
Apr	21	50	13	14,418	2,762	6,386	13.0	3.73	3.05	5.76	236
May	20	50	13	14,234	2,895	6,561	11.9	3.69	3.03	5.74	235
Jun	19	49	13	14,067	2,779	6,585	11.6	3.61	2.98	5.76	247
Jul	19	49	13	14,379	2,828	6,344	11.3	3.59	2.92	5.74	274
Aug	22	50	12	14,368	2,880	6,466	12.4	3.59	2.97	5.72	286
Sep	21	50	13	14,013	2,671	6,353	13.6	3.69	3.06	5.74	258
Oct	20	50	13	13,941	2,704	6,255	13.3	3.79	3.14	5.74	234
Nov	20	50	14	14,029	2,697	6,406	13.5	3.87	3.17	5.74	218
Dec	22	50	13	12,903	2,517	6,290	14.7	3.86	3.15	5.75	214
Jan 2012	20	50	13		2,875		11.6	3.84	3.13	5.76	212
Feb	19	50	12		2,710		11.4	3.82	3.12	5.76	214

* NASS = National Agricultural Statistics Service, USDA.

Class Prices

Month/Year	Class I Price Mover			Class I Price at Cook County, IL			Class II Price			
	Butterfat	Skim Milk	3.50%	Butterfat	Skim Milk	3.50%	Butterfat	Nonfat Solids	Skim Milk	3.50%
	<i>lb.</i>	<i>cwt.</i>	<i>cwt.</i>	<i>lb.</i>	<i>cwt.</i>	<i>cwt.</i>	<i>lb.</i>	<i>lb.</i>	<i>cwt.</i>	<i>cwt.</i>
Feb 2011	1.9003	9.57	15.89	1.9183	11.37	17.69	2.3037	1.1411	10.27	17.97
Mar	2.3136	10.50	18.23	2.3316	12.30	20.03	2.2929	1.2444	11.20	18.83
Apr	2.2583	11.94	19.43	2.2763	13.74	21.23	2.2183	1.3700	12.33	19.66
May	2.1984	12.49	19.75	2.2164	14.29	21.55	2.2567	1.4656	13.19	20.63
Jun	2.2700	12.82	20.32	2.2880	14.62	22.12	2.3772	1.5022	13.52	21.37
Jul	2.3770	13.17	21.03	2.3950	14.97	22.83	2.2581	1.5411	13.87	21.29
Aug	2.2496	14.05	21.43	2.2676	15.85	23.23	2.3055	1.5522	13.97	21.55
Sep	2.3175	14.16	21.78	2.3355	15.96	23.58	2.2075	1.4767	13.29	20.55
Oct	2.2014	12.28	19.56	2.2194	14.08	21.36	1.9662	1.4422	12.98	19.41
Nov	1.9179	12.16	18.45	1.9359	13.96	20.25	1.9578	1.4289	12.86	19.26
Dec	2.0191	11.82	18.47	2.0371	13.62	20.27	1.7513	1.3756	12.38	18.08
Jan 2012	1.7395	13.17	18.80	1.7575	14.97	20.60	1.7248	1.3389	12.05	17.67
Feb	1.7170	11.42	17.03	1.7350	13.22	18.83	1.5809	1.3133	11.82	16.94
Mar	1.6355	10.96	16.30	1.6535	12.76	18.10		1.2911	11.62	

Month/Year	Class III Price					Class IV Price			
	Butterfat	Protein	Other Solids	Skim Milk	3.50%	Butterfat	Nonfat Solids	Skim Milk	3.50%
	<i>lb.</i>	<i>lb.</i>	<i>lb.</i>	<i>cwt.</i>	<i>cwt.</i>	<i>lb.</i>	<i>lb.</i>	<i>cwt.</i>	<i>cwt.</i>
Feb 2011	2.2967	2.5586	0.2310	9.29	17.00	2.2967	1.1930	10.74	18.40
Mar	2.2859	3.3024	0.2665	11.81	19.40	2.2859	1.3134	11.82	19.41
Apr	2.2113	2.4984	0.2902	9.46	16.87	2.2113	1.3862	12.48	19.78
May	2.2497	2.3133	0.3026	8.96	16.52	2.2497	1.4298	12.87	20.29
Jun	2.3702	2.9807	0.3339	11.21	19.11	2.3702	1.4694	13.22	21.05
Jul	2.2511	3.8292	0.3608	14.00	21.39	2.2511	1.4336	12.90	20.33
Aug	2.2985	3.8305	0.3811	14.12	21.67	2.2985	1.3920	12.53	20.14
Sep	2.2005	3.0282	0.4053	11.78	19.07	2.2005	1.3623	12.26	19.53
Oct	1.9592	2.9211	0.4286	11.58	18.03	1.9592	1.3297	11.97	18.41
Nov	1.9508	3.2341	0.4521	12.69	19.07	1.9508	1.2716	11.44	17.87
Dec	1.7443	3.3404	0.4683	13.12	18.77	1.7443	1.2398	11.16	16.87
Jan 2012	1.7178	2.7326	0.5032	11.44	17.05	1.7178	1.2141	10.93	16.56
Feb	1.5739	2.6627	0.4541	10.93	16.06	1.5739	1.1993	10.79	15.92

Producer Prices

Month/Year	Producer Price Differential	Statistical Uniform Price (at 3.50%)	Butterfat Price	Protein Price	Other Solids Price	SCC Adjustment Rate	Producer Mailbox Price (at test)
	<i>\$ per cwt.</i>	<i>\$ per cwt.</i>	<i>\$ per lb.</i>	<i>\$ per lb.</i>	<i>\$ per lb.</i>	<i>\$ per cwt.</i>	<i>\$ per cwt.</i>
	Dec 2010	0.58	14.41	1.7952	2.1706	0.1852	0.00073
Jan 2011	0.64	14.12	2.0239	1.7590	0.2002	0.00070	16.12
Feb	0.23	17.23	2.2967	2.5586	0.2310	0.00087	18.99
Mar	0.03	19.43	2.2859	3.3024	0.2665	0.00099	20.70
Apr	0.64	17.51	2.2113	2.4984	0.2902	0.00085	18.97
May	0.74	17.26	2.2497	2.3133	0.3026	0.00083	18.86
Jun	0.47	19.58	2.3702	2.9807	0.3339	0.00095	20.56
Jul	0.21	21.60	2.2511	3.8292	0.3608	0.00106	21.84
Aug	0.25	21.92	2.2985	3.8305	0.3811	0.00107	22.23
Sep	0.64	19.71	2.2005	3.0282	0.4053	0.00093	20.88
Oct	0.38	18.41	1.9592	2.9211	0.4286	0.00087	20.14
Nov	0.08	19.15	1.9508	3.2341	0.4521	0.00092	20.97
Dec	(0.06)	18.71	1.7443	3.3404	0.4683	0.00090	20.70
Jan 2012	0.39	17.44	1.7178	2.7326	0.5032	0.00080	
Feb	0.29	16.35	1.5739	2.6627	0.4541	0.00077	

FEDERAL MILK MARKET ADMINISTRATOR
 U.S. DEPARTMENT OF AGRICULTURE
 1600 W. 82nd St., Suite 200
 Minneapolis, MN 55431-1420

FIRST-CLASS MAIL
 U.S. POSTAGE PAID
 HOPKINS, MN
 PERMIT NO. 586

Address Service Requested

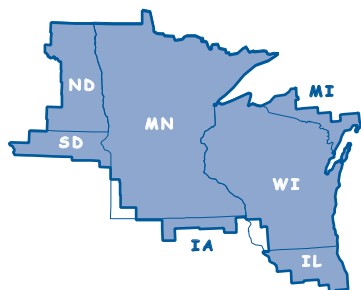
Summary of Federal Order Data - February 2012

Federal Order Number / Name	Producer Deliveries <i>— Thousand Pounds —</i>	Class I Producer Receipts <i>— Thousand Pounds —</i>	Class I Utilization <i>Percent</i>	Class I Price <i>— Dollars per Cwt. —</i>	Producer Price Differential	Uniform or Statistical Uniform Price at 3.5% Butterfat		
						FOB Market	FOB Cook Cty. Illinois <i>Dollars per Cwt.</i>	Change From Previous Year
1 Northeast	1,980,203	790,479	39.9	\$20.28	\$2.03	\$18.09	\$16.64	\$(0.66)
5 Appalachian	502,080	347,952	69.3	20.43	n/a	19.22	17.62	(0.36)
6 Florida	241,554	204,102	84.5	22.43	n/a	21.34	17.74	(0.04)
7 Southeast	566,328	364,958	64.4	20.83	n/a	19.38	17.38	(0.22)
30 Upper Midwest	2,709,542	308,346	11.4	18.83	0.29	16.35	16.35	(0.88)
32 Central	1,373,695	392,719	28.6	19.03	0.57	16.63	16.43	(0.87)
33 Mideast	1,469,717	509,385	34.7	19.03	0.92	16.98	16.78	(0.70)
124 Pacific Northwest	665,648	178,027	26.7	18.93	0.58	16.64	16.54	(1.14)
126 Southwest	1,083,688	352,667	32.5	20.03	1.52	17.58	16.38	(0.84)
131 Arizona	400,009	113,105	28.3	19.38	n/a	16.94	16.39	(1.24)
All Market Average or Total *	10,992,465	3,561,739	32.4					

n/a = Not applicable. * May not add due to rounding.

The U.S. Department of Agriculture (USDA) prohibits discrimination in all of its programs and activities on the basis of race, color, national origin, age, disability, and where applicable, sex (including gender identity and expression), marital status, familial status, parental status, religion, sexual orientation, political beliefs, genetic information, reprisal, or because all or part of an individual's income is derived from any public assistance program. (Not all prohibited bases apply to all programs.) Persons with disabilities who require alternative means for communication of program information (Braille, large print, audiotape, etc.) should contact USDA's TARGET Center at (202) 720-2600 (voice and TDD).

To file a complaint of discrimination, write to USDA, Assistant Secretary for Civil Rights, Office of the Assistant Secretary for Civil Rights, 1400 Independence Avenue, S.W., Stop 9410, Washington, D.C. 20250-9410, or call toll-free at (866) 632-9992 (English) or (800) 877-8339 (TDD) or (866) 377-8642 (English Federal-relay) or (800) 845-6136 (Spanish Federal-relay). USDA is an equal opportunity provider and employer.



Upper Midwest Marketing Area F.O. 30

Phone: (952) 831-5292
 Fax: (952) 831-8249

Website: www.fmma30.com

