



UPPER MIDWEST DAIRY NEWS

H. Paul Kyburz, Market Administrator

Volume 14, Issue 4

Upper Midwest Marketing Area, Federal Order No. 30

April 2013

Inside This Issue:

Computation of Producer Price Differential 4

Utilization and Classification..... 5

Commodity Prices and Market Statistics..... 6

Class Prices and Producer Prices 7

Dairy Commodity Prices Up

Dairy product prices on the Chicago Mercantile Exchange (CME) were up sharply from mid-March through mid-April after declining in late February and early March. The increases were driven primarily by international demand and low inventories.

On April 18, the CME barrel cheddar cheese price closed at \$1.76 per pound, up 17¢ from March 18 and 30¢ above a year earlier. The 40-pound block price of \$1.88½ on April 18 was up 27¢ from March 18 and 38¢ above a year ago. The CME butter price closed at

\$1.78¾ per pound on April 18, up 12¼¢ from last month and 37½¢ above last April. Nonfat dry milk prices on April 18 were up 14¢ and 28½¢ respectively from March 18 for Extra Grade and Grade A to \$1.70 and \$1.78½.

The March Federal order Class III price of \$16.93 per cwt. was down 32¢ from February, the fifth consecutive monthly decline, but was \$1.21 higher than last year. However, the April 18 CME Class III futures market has the price peaking at \$19.64 in June and not falling below \$19 until November this year.



Upper Midwest Order--Sources of Producer Milk

Producer Milk by State

During December 2012, 71% of producer milk was received from Wisconsin, with 21% from Minnesota (See Table 1 on Page 2). The remaining producer milk, about 8%, was primarily received from Illinois, Iowa, Michigan, Nebraska, and North and South Dakota. In addition, a small amount of milk was pooled from each of the states of Idaho, Indiana, Kansas, Missouri, and Oklahoma.

Producer milk in December 2012 totaled 2.8 billion pounds, up 265 million pounds from

the previous year. Producer milk was received from Oklahoma in December 2012, but not in December 2011. Conversely, producer milk was received from New Mexico and Utah in December 2011, but not in December 2012.

The number of counties from which producer milk was received, the number of producers, and pounds of producer milk represented by each state in December 2012 are shown in Table 1 on Page 2. In addition, the percentage of producer milk represented by each state is shown for December of 2012, 2011, and 2010.

Continued on Page 2

Pool Summary

- In March, producer milk totaled 3.0 billion pounds, up 311 million pounds from February and 71 million pounds above March 2012.
- Class I utilization totaled 313 million pounds, down 4.6% from February on a daily basis. Class I usage accounted for 10.4% of producer milk.
- Class III utilization totaled 2.6 billion pounds and accounted for 86.9% of producer milk.
- The March Producer Price Differential (PPD) was \$0.33 per cwt.
- The Statistical Uniform Price was \$17.26 per cwt., down \$0.31 from February, but \$1.28 above March 2012.
- Market statistics for March are shown on Pages 4 and 5.

March 2013 Producer Milk by Class

	Percent	Product Pounds	Price \$/cwt.
Class I	10.4	312,648,591	19.60
Class II	1.8	55,476,430	18.82
Class III	86.9	2,614,729,461	16.93
Class IV	0.9	26,781,801	17.75
Total		3,009,636,283	

**Table 1
Producer Milk by State, December 2012**

	Counties from Which Received	Number of Producers	Million Pounds	Producer Milk		
				Percent of Market - December		
				2012	2011	2010
Wisconsin ^{1/}	69	8,709	1,966.1	70.7	68.6	66.7
Minnesota	82	3,056	573.4	20.6	21.7	24.2
Iowa	40	235	90.8	3.3	3.7	3.4
South Dakota	19	78	79.5	2.9	2.9	3.1
Illinois	16	247	44.6	1.6	1.8	1.4
North Dakota	20	44	12.6	0.5	0.5	0.8
Nebraska	2	R	R	R	R	0
Michigan	6	36	8.0	0.3	0.5	0.3
Indiana	5	8	4.7	0.2	0.2	R
Missouri	11	26	1.1	*	*	*
Idaho	1	R	R	R	*	0.1
Oklahoma	1	R	R	R	0	0
Kansas	1	R	R	R	R	0
New Mexico	0	0	0	0	R	0
Utah	0	0	0	0	R	0
Market **	273	12,439	2,780.8	100.0	100.0	100.0

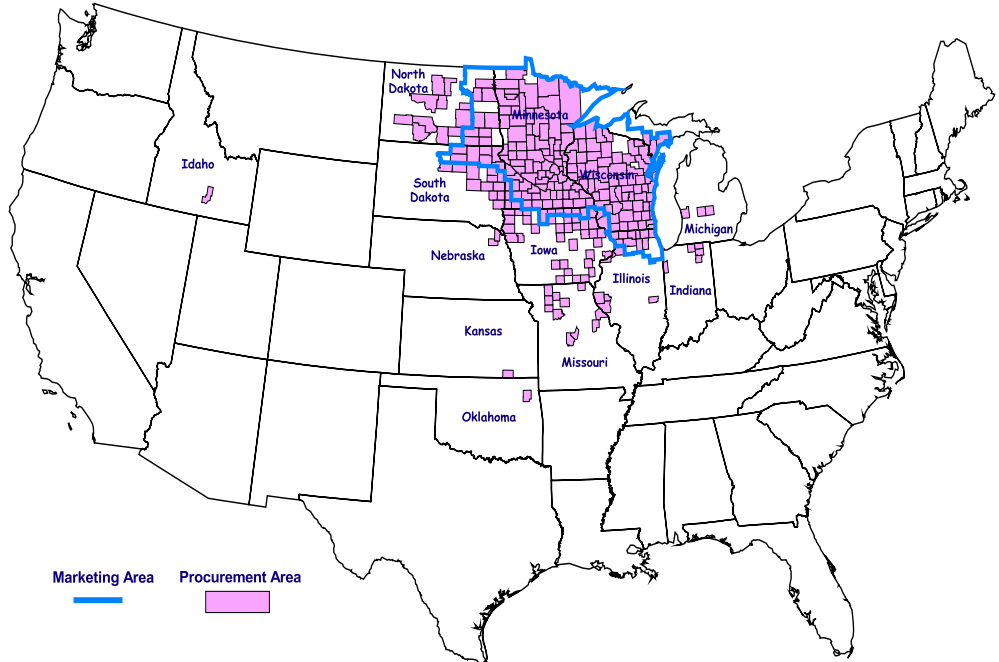
^{1/} Wisconsin data includes data for states which are restricted.
 R = Restricted. Included with Wisconsin data.
 * Less than 0.05%.
 ** Revised from previously published data. Totals may not add due to rounding.

Continued from Page 1

The map to the right depicts the states and counties from which producer milk was received in December 2012. The 15 top counties from which producer milk was received in December 2012 are shown in Table 2, along with the number of producers and pounds of producer milk represented by each county. The rank, number of producers and pounds of producer milk for those same counties for December 2011 are also shown.

Wisconsin has 13 of the top 15 counties in December 2012, and Minnesota has the remaining two. The makeup of the top 15 counties in December 2012 was slightly different from a year earlier. The counties ranked 14th and 15th in 2012, Chippewa, Wisconsin and Winona, Minnesota respectively were 16th and 20th in 2011,

Upper Midwest Marketing Area and December 2012 Procurement Area



pushing Waupaca and Grant counties in Wisconsin, ranked 14th and 15th in 2011, out of the top 15 in 2012.

There also was shifting among the counties that remained in the top 15 both years. Manitowoc County, Wisconsin, ranked 6th in 2011, took the 2nd spot in 2012, bumping Stearns County, Minnesota down to 7th, and shifting Marathon County, Wisconsin from 7th

in 2011 to 6th in 2012. Clark and Brown counties in Wisconsin also switched places at 3rd and 4th.

The top 15 counties supplied 40% of total producer milk on the order in December 2012, and accounted for 36% of the producers. The 15 top counties in 2012 all had more producer milk pooled than they did in 2011, collectively gaining nearly 12%.

A complete list of producer milk by state and county for December 2012 and December 2011 is available on our website at: www.fm30.com/homepage/fo30_data.html.

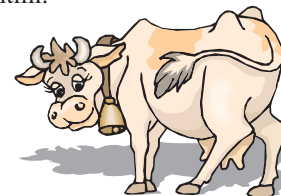


Table 2
15 Top Counties in Deliveries of Producer Milk *

County	State	December 2012			December 2011		
		Rank	Number of Producers	Producer Milk (Mil. Lbs.)	Rank	Number of Producers	Producer Milk (Mil. Lbs.)
Dane	WI	1	281	99	1	297	92
Manitowoc	WI	2	234	96	6	248	80
Clark	WI	3	716	93	4	677	80
Brown	WI	4	161	89	3	196	81
Fond du Lac	WI	5	263	88	5	265	80
Marathon	WI	6	558	88	7	512	78
Stearns	MN	7	606	86	2	614	82
Kewaunee	WI	8	150	72	8	170	64
Outagamie	WI	9	205	68	9	207	63
Dodge	WI	10	284	66	10	306	61
Calumet	WI	11	145	61	11	149	57
Shawano	WI	12	295	60	12	275	49
Sheboygan	WI	13	153	51	13	152	46
Chippewa	WI	14	316	43	16	320	38
Winona	MN	15	126	41	20	109	34
Total **			4,493	1,101		4,497	986
Market			12,439	2,781		12,903	2,516
Percentage of Market			36	40		35	39

* Revised from previously published data.

** Producer milk totals may not add due to rounding.

Upper Midwest Pool Statistics - March 2013

Market Class I Differential Rate	Pool Plants	Received at Pool Plants	Diverted to Pool and Nonpool Plants	Total	Location Adjustment to Producers	Class I Differential to Handlers	
<i>Cwt.</i>	<i>Number</i>	<i>Pounds</i>	<i>Pounds</i>	<i>Pounds</i>	<i>Value</i>	<i>Pounds</i>	<i>Value</i>
\$1.80	3	88,395,009	21,556,613	109,951,622	\$ 0	90,152,101	\$1,622,738
\$1.75	32	118,075,977	1,095,852,892	1,213,928,869	606,965	78,145,032	1,367,538
\$1.70	28	220,472,450	1,355,741,730	1,576,214,180	1,576,214	124,996,836	2,124,946
\$1.65	4	23,725,405	85,816,207	109,541,612	164,312	19,354,622	319,351
Total	67	450,668,841	2,558,967,442	3,009,636,283	\$2,347,491	312,648,591	\$5,434,573

Computation of Producer Price Differential - March 2013

	Utilization Percentage	Product Pounds	Component Pounds	Rate	Value
Class I					
Differential Value					\$ 5,434,573.39
Product	10.4%	312,648,591			
Skim Milk			308,161,483	\$12.4400	38,335,288.48
Butterfat			4,487,108	1.6564	7,432,445.69
Class II					
Product	1.8%	55,476,430			
Nonfat Solids			4,457,240	1.4600	6,507,570.40
Butterfat			7,266,235	1.7546	12,749,335.94
Class III					
Product	86.9%	2,614,729,461			
Protein			82,419,264	2.8204	232,455,292.18
Other Solids			150,472,391	0.4179	62,882,412.21
Butterfat			95,186,381	1.7476	166,347,719.47
Class IV					
Product	0.9%	26,781,801			
Nonfat Solids			1,598,627	1.3395	2,141,360.86
Butterfat			9,453,461	1.7476	16,520,868.42
SCC Adjustment (Class II, III, and IV)					3,037,489.82
Total Producer Milk *		3,009,636,283			\$ 553,844,356.86
Add:					
Overage					41,825.72
Inventory Reclassified					(50,982.02)
Other Source Milk \$.60(h)					0.00
Other Source Milk \$.60(i)		257,535			6,361.11
Subtract:					
Transportation Credit					34,700.31
Assembly Credit					249,180.09
Credit for Reconstituted FMP					0.00
Producer Milk Protein					266,843,614.28
Producer Milk Other Solids					72,198,093.56
Producer Milk Butterfat					203,408,730.11
Producer Milk SCC Adjustment					3,407,738.74
Total Milk and Value		3,009,893,818			\$ 7,699,504.58
Add:					
Location Adjustment -- Producer and Unregulated Supply Plant Milk					2,348,006.29
One-Half Unobligated Balance Producer Settlement Fund					1,290,492.36
Total Value				0.376691	\$ 11,338,003.23
Subtract:					
Producer Settlement Fund Reserve				0.046691	1,405,353.63
Producer Price Differential **				\$0.33	\$ 9,932,649.60

* An estimated 237 million pounds of milk was not pooled.

** Producer Price Differential is dollars per cwt. at the Base Zone of Cook County, Illinois.



Utilization and Classification of Milk

	March 2013		February 2013	March 2012
	Product Pounds	Butterfat Pounds	Product Pounds	Product Pounds
Class I Utilization:				
Packaged Disposition				
Milk	40,538,030	1,332,202	38,452,634	39,952,303
Flavored Milk	2,386,145	75,498	2,173,747	2,288,161
Reduced Fat Milk	112,848,542	2,181,025	106,534,087	112,425,600
Lowfat Milk	56,880,524	530,725	53,685,541	58,273,911
Fat Free Milk	69,207,315	63,582	65,436,433	75,639,238
Flavored Reduced and Fat Free Milk	28,883,189	206,745	29,635,147	32,559,911
Buttermilk	2,903,913	39,526	2,431,580	2,808,492
Total Packaged Disposition	313,647,658	4,429,303	298,349,169	323,947,616
Total Ending Inventory	20,725,625	281,866	21,332,696	20,312,028
Bulk to Nonpool Plants	1,141,925	22,729	881,854	1,790,927
Shrinkage	1,452,680	88,882	1,055,372	1,135,413
Total Class I Utilization	336,967,888	4,822,780	321,619,091	347,185,984
Other Order Plants	(2,666,880)	(43,171)	(3,142,663)	(2,973,282)
Beginning Inventory	(21,338,911)	(291,900)	(22,232,436)	(20,410,730)
Reused Products	0	0	0	0
Other Source Milk	(270,061)	(110)	(248,161)	(438,435)
Overage	0	0	0	0
Interhandler Adjustment	(43,445)	(491)	43,612	4,348
Class I Producer Milk	312,648,591	4,487,108	296,039,443	323,367,885
Class II Utilization:				
Total Class II Utilization	64,371,009	7,598,497	66,610,285	67,002,660
Other Order Plants	0	0	0	--
Beginning Inventory	--	--	(65,771)	(1,358,013)
Reused Products	(8,621,688)	(64,627)	(8,588,600)	(5,436,637)
Other Source Milk	(272,891)	(267,635)	(176,000)	(42,010)
Overage	--	--	--	--
Class II Producer Milk	55,476,430	7,266,235	57,779,914	60,166,000
Class III Utilization:				
Total Class III Utilization	2,622,626,437	95,290,008	2,327,794,950	2,476,747,882
Other Order Plants	--	--	(300,175)	(2,767,724)
Beginning Inventory	(5,517,122)	(42,039)	(5,284,472)	(2,112,695)
Reused Products	0	0	0	0
Other Source Milk	(2,331,274)	(55,657)	(6,623,887)	(483,540)
Overage	(48,580)	(5,931)	(57,282)	(80,533)
Class III Producer Milk	2,614,729,461	95,186,381	2,315,529,134	2,471,303,390
Class IV Utilization:				
Total Class IV Utilization	126,186,747	13,449,732	115,598,190	190,920,395
Other Order Plants	(5,464,075)	(199,054)	(1,677,723)	(6,578,968)
Beginning Inventory	(14,989,521)	(868,232)	(14,221,970)	(14,470,629)
Reused Products	0	0	0	0
Other Source Milk	(78,909,361)	(2,918,542)	(70,087,401)	(86,429,747)
Overage	(41,989)	(10,443)	(13,014)	(49,288)
Class IV Producer Milk	26,781,801	9,453,461	29,598,082	83,391,763
Total Producer Milk -- All Classes	3,009,636,283	116,393,185	2,698,946,573	2,938,229,038

-- Restricted Information

Commodity Prices

Month/Year	Weighted Monthly Average Prices *						Weighted Two-Week Average Prices *					
	Cheddar Cheese			Nonfat			Cheddar Cheese			Nonfat		
	Blocks	Barrels	Average	Butter	Dry Milk	Dry Whey	Blocks	Barrels	Average	Butter	Dry Milk	Dry Whey
	<i>Dollars per Pound</i>						<i>Dollars per Pound</i>					
Mar 2012	1.4972	1.5193	1.5248	1.4347	1.3310	0.6107	1.4941	1.5100	1.5186	1.4299	1.3334	0.6117
Apr	1.5209	1.5209	1.5361	1.4634	1.2514	0.5921	1.5317	1.5247	1.5431	1.4624	1.2642	0.6022
May	1.5229	1.4900	1.5215	1.3657	1.1551	0.5389	1.5270	1.4915	1.5243	1.3506	1.1460	0.5355
Jun	1.5837	1.5556	1.5846	1.3991	1.1023	0.5013	1.5704	1.5401	1.5703	1.3766	1.1008	0.5052
Jul	1.6547	1.6950	1.6857	1.5386	1.1744	0.5023	1.6434	1.6865	1.6781	1.5246	1.1588	0.4944
Aug	1.7483	1.7624	1.7682	1.6859	1.2543	0.5352	1.7361	1.7464	1.7545	1.6877	1.2518	0.5350
Sep	1.8582	1.8423	1.8647	1.8269	1.3768	0.5846	1.8524	1.8262	1.8542	1.8237	1.3708	0.5804
Oct	2.0366	2.0308	2.0479	1.9168	1.4636	0.6205	1.9953	2.0156	2.0186	1.9197	1.4503	0.6130
Nov	2.0210	1.9769	2.0146	1.8410	1.5143	0.6480	2.0669	2.0474	2.0717	1.8860	1.5112	0.6450
Dec	1.8090	1.7439	1.7925	1.5981	1.5384	0.6610	1.8405	1.7769	1.8250	1.6126	1.5442	0.6588
Jan 2013	1.7449	1.7277	1.7485	1.5066	1.5601	0.6503	1.7506	1.7264	1.7535	1.5280	1.5603	0.6536
Feb	1.6754	1.6190	1.6623	1.5438	1.5559	0.6393	1.6694	1.5993	1.6480	1.5393	1.5644	0.6399
Mar	1.6339	1.6296	1.6467	1.6146	1.5208	0.6048	1.6362	1.6142	1.6402	1.5909	1.5219	0.6094

Chicago Mercantile Exchange

Month/Year	Butter	Cheddar Cheese		Nonfat Dry Milk (Low/Medium Heat)		Whey Powder	
	Grade AA	Blocks	Barrels	Central & East	West	Central	West
	<i>Dollars per Pound</i>						
Mar 2012	1.4895	1.5193	1.5152	1.3077	1.2785	0.5273	0.4675
Apr	1.4136	1.5039	1.4524	1.2267	1.2186	0.4639	0.4604
May	1.3531	1.5234	1.4701	1.1748	1.1230	0.4602	0.4498
Jun	1.4774	1.6313	1.5871	1.2039	1.1733	0.4814	0.4894
Jul	1.5831	1.6855	1.6826	1.2758	1.2141	0.4795	0.5035
Aug	1.7687	1.8262	1.7889	1.4312	1.3770	0.5221	0.5553
Sep	1.8803	1.9245	1.8780	1.5963	1.5157	0.5751	0.5979
Oct	1.9086	2.0757	2.0240	1.5555	1.4973	0.6003	0.6134
Nov	1.7910	1.9073	1.8388	1.5458	1.5163	0.6299	0.6221
Dec	1.5590	1.7448	1.6634	1.5666	1.5458	0.6318	0.6184
Jan 2013	1.4933	1.6965	1.6388	1.5723	1.6592	0.6302	0.5993
Feb	1.5713	1.6420	1.5880	1.5590	1.5291	0.6137	0.5894
Mar	1.6421	1.6240	1.5920	1.5268	1.4995	0.5830	0.5768

Market Statistics

Month/Year	Distributing	Supply	Coop .9(c)	Producers	Total	Est. Average	Class I	Butterfat	Protein	Other	Weighted					
	Plants	Plants	Handlers		Producer	Daily Delivery						Utilization	Test	Test	Solids	Average
					Milk	Per Producer						Percent	Percent	Percent	Percent	SCC
					<i>Mil. lbs.</i>	<i>Pounds</i>						<i>(000)</i>				
Mar 2012	19	50	12	13,646	2,938	6,943	11.0	3.77	3.07	5.76	216					
Apr	18	50	12	13,627	2,890	7,069	10.6	3.75	3.07	5.78	213					
May	19	50	13	13,729	3,045	7,154	10.5	3.70	3.04	5.76	212					
Jun	20	51	12	12,744	2,582	6,753	11.4	3.63	3.00	5.76	221					
Jul	20	53	12	11,551	2,235	6,239	13.2	3.58	2.94	5.74	246					
Aug	20	51	12	11,196	2,262	6,513	14.5	3.63	3.01	5.74	248					
Sep	20	51	12	10,911	2,072	6,327	15.1	3.74	3.09	5.73	227					
Oct	21	51	12	11,083	2,027	5,897	16.7	3.89	3.17	5.73	209					
Nov	21	51	12	11,721	2,265	6,441	14.8	3.91	3.18	5.72	203					
Dec	21	50	12	12,439	2,782	7,211	11.6	3.89	3.15	5.74	201					
Jan 2013	21	51	12	12,935	3,030	7,550	11.0	3.89	3.14	5.74	210					
Feb	19	51	12		2,699		11.0	3.88	3.14	5.75	214					
Mar	18	49	12		3,010		10.4	3.87	3.14	5.74	212					

* Average prices released before April 1, 2012 are based on NASS survey prices, but AMS survey prices thereafter.

Class Prices

Month/Year	Class I Price Mover			Class I Price at Cook County, IL			Class II Price			
	Butterfat	Skim Milk	3.50%	Butterfat	Skim Milk	3.50%	Butterfat	Nonfat Solids	Skim Milk	3.50%
	<i>lb.</i>	<i>cwt.</i>	<i>cwt.</i>	<i>lb.</i>	<i>cwt.</i>	<i>cwt.</i>	<i>lb.</i>	<i>lb.</i>	<i>cwt.</i>	<i>cwt.</i>
Mar 2012	1.6355	10.96	16.30	1.6535	12.76	18.10	1.5367	1.2911	11.62	16.59
Apr	1.5239	10.70	15.66	1.5419	12.50	17.46	1.5715	1.2322	11.09	16.20
May	1.5633	10.76	15.85	1.5813	12.56	17.65	1.4532	1.1633	10.47	15.19
Jun	1.4279	10.61	15.24	1.4459	12.41	17.04	1.4936	1.0467	9.42	14.32
Jul	1.4594	10.78	15.51	1.4774	12.58	17.31	1.6626	1.0011	9.01	14.51
Aug	1.6386	11.21	16.55	1.6566	13.01	18.35	1.8409	1.0589	9.53	15.64
Sep	1.8361	11.57	17.59	1.8541	13.37	19.39	2.0117	1.1511	10.36	17.04
Oct	2.0008	12.31	18.88	2.0188	14.11	20.68	2.1206	1.2689	11.42	18.44
Nov	2.1171	13.77	20.70	2.1351	15.57	22.50	2.0288	1.3478	12.13	18.81
Dec	2.0763	14.63	21.39	2.0943	16.43	23.19	1.7346	1.4078	12.67	18.30
Jan 2013	1.7452	13.33	18.97	1.7632	15.13	20.77	1.6238	1.4400	12.96	18.19
Feb	1.6427	12.91	18.21	1.6607	14.71	20.01	1.6689	1.4567	13.11	18.49
Mar	1.6564	12.44	17.80	1.6744	14.24	19.60	1.7546	1.4600	13.14	18.82
Apr	1.7189	12.07	17.66	1.7369	13.87	19.46		1.4189	12.77	

Month/Year	Class III Price					Class IV Price			
	Butterfat	Protein	Other Solids	Skim Milk	3.50%	Butterfat	Nonfat Solids	Skim Milk	3.50%
	<i>lb.</i>	<i>lb.</i>	<i>lb.</i>	<i>cwt.</i>	<i>cwt.</i>	<i>lb.</i>	<i>lb.</i>	<i>cwt.</i>	<i>cwt.</i>
Mar 2012	1.5297	2.6571	0.4239	10.74	15.72	1.5297	1.1516	10.36	15.35
Apr	1.5645	2.6568	0.4048	10.62	15.72	1.5645	1.0728	9.66	14.80
May	1.4462	2.7344	0.3500	10.54	15.23	1.4462	0.9774	8.80	13.55
Jun	1.4866	2.8952	0.3113	10.81	15.63	1.4866	0.9252	8.33	13.24
Jul	1.6556	3.0430	0.3123	11.28	16.68	1.6556	0.9965	8.97	14.45
Aug	1.8339	3.1211	0.3462	11.72	17.73	1.8339	1.0756	9.68	15.76
Sep	2.0047	3.2521	0.3971	12.42	19.00	2.0047	1.1969	10.77	17.41
Oct	2.1136	3.7278	0.4340	14.12	21.02	2.1136	1.2828	11.55	18.54
Nov	2.0218	3.7172	0.4624	14.25	20.83	2.0218	1.3330	12.00	18.66
Dec	1.7276	3.3113	0.4758	13.07	18.66	1.7276	1.3569	12.21	17.83
Jan 2013	1.6168	3.2862	0.4647	12.93	18.14	1.6168	1.3784	12.41	17.63
Feb	1.6619	2.9609	0.4534	11.85	17.25	1.6619	1.3742	12.37	17.75
Mar	1.7476	2.8204	0.4179	11.21	16.93	1.7476	1.3395	12.06	17.75

Producer Prices

Month/Year	Producer Price Differential	Statistical Uniform Price (at 3.50%)	Butterfat Price	Protein Price	Other Solids Price	SCC Adjustment Rate	Producer Mailbox Price (at test)
	<i>\$ per cwt.</i>	<i>\$ per cwt.</i>	<i>\$ per lb.</i>	<i>\$ per lb.</i>	<i>\$ per lb.</i>	<i>\$ per cwt.</i>	<i>\$ per cwt.</i>
Jan 2012	0.39	17.44	1.7178	2.7326	0.5032	0.00080	19.33
Feb	0.29	16.35	1.5739	2.6627	0.4541	0.00077	18.21
Mar	0.26	15.98	1.5297	2.6571	0.4239	0.00076	17.57
Apr	0.20	15.92	1.5645	2.6568	0.4048	0.00077	17.46
May	0.22	15.45	1.4462	2.7344	0.3500	0.00076	16.81
Jun	0.07	15.70	1.4866	2.8952	0.3113	0.00079	16.92
Jul	(0.02)	16.66	1.6556	3.0430	0.3123	0.00084	17.54
Aug	(0.04)	17.69	1.8339	3.1211	0.3462	0.00088	18.89
Sep	(0.14)	18.86	2.0047	3.2521	0.3971	0.00093	20.61
Oct	(0.49)	20.53	2.1136	3.7278	0.4340	0.00102	22.85
Nov	(0.15)	20.68	2.0218	3.7172	0.4624	0.00101	22.75
Dec	0.32	18.98	1.7276	3.3113	0.4758	0.00090	21.17
Jan 2013	0.20	18.34	1.6168	3.2862	0.4647	0.00087	20.42
Feb	0.32	17.57	1.6619	2.9609	0.4534	0.00083	
Mar	0.33	17.26	1.7476	2.8204	0.4179	0.00082	

FEDERAL MILK MARKET ADMINISTRATOR
 U.S. DEPARTMENT OF AGRICULTURE
 1600 West 82nd Street, Suite 200
 Minneapolis, MN 55431-1420

FIRST-CLASS MAIL
 U.S. POSTAGE PAID
 HOPKINS, MN
 PERMIT NO. 586

Address Service Requested

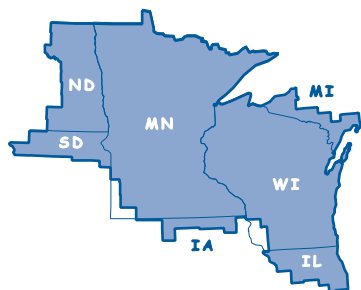
Summary of Federal Order Data - March 2013

Federal Order Number / Name	Producer Deliveries <i>— Thousand Pounds —</i>	Class I Producer Receipts <i>— Thousand Pounds —</i>	Class I Utilization <i>Percent</i>	Class I Price <i>— Dollars per Cwt. —</i>	Producer Price Differential	Uniform or Statistical Uniform Price at 3.5% Butterfat		
						FOB Market	FOB Cook Cty. Illinois <i>Dollars per Cwt.</i>	Change From Previous Year
1 Northeast	2,242,982	809,469	36.1	\$ 21.05	\$2.39	\$ 19.32	\$ 17.87	\$1.68
5 Appalachian	523,402	317,672	60.7	21.20	n/a	20.29	18.69	1.81
6 Florida	251,321	214,091	85.2	23.20	n/a	22.59	18.99	1.76
7 Southeast	552,488	357,121	64.6	21.60	n/a	20.70	18.70	2.08
30 Upper Midwest	3,009,636	312,649	10.4	19.60	0.33	17.26	17.26	1.28
32 Central	1,347,251	409,336	30.4	19.80	0.94	17.87	17.67	1.65
33 Mideast	1,436,727	547,744	38.1	19.80	1.29	18.22	18.02	1.67
124 Pacific Northwest	727,017	177,334	24.4	19.70	0.89	17.82	17.72	1.68
126 Southwest	1,220,438	356,945	29.2	20.80	1.71	18.64	17.44	1.46
131 Arizona	434,498	114,942	26.5	20.15	n/a	18.30	17.75	1.90
All Market Average or Total *	11,745,760	3,617,302	30.8					

n/a = Not applicable. * May not add due to rounding.

The U.S. Department of Agriculture (USDA) prohibits discrimination in all of its programs and activities on the basis of race, color, national origin, age, disability, and where applicable, sex (including gender identity and expression), marital status, familial status, parental status, religion, sexual orientation, political beliefs, genetic information, reprisal, or because all or part of an individual's income is derived from any public assistance program. (Not all prohibited bases apply to all programs.) Persons with disabilities who require alternative means for communication of program information (Braille, large print, audiotape, etc.) should contact USDA's TARGET Center at (202) 720-2600 (voice and TDD).

To file a complaint of discrimination, write to USDA, Assistant Secretary for Civil Rights, Office of the Assistant Secretary for Civil Rights, 1400 Independence Avenue, S.W., Stop 9410, Washington, D.C. 20250-9410, or call toll-free at (866) 632-9992 (English) or (800) 877-8339 (TDD) or (866) 377-8642 (English Federal-relay) or (800) 845-6136 (Spanish Federal-relay). USDA is an equal opportunity provider and employer.



Upper Midwest Marketing Area F.O. 30

Phone: (952) 831-5292
 Fax: (952) 831-8249

Website: www.fmma30.com

