



Federal Milk Market Administrator

U.S. Department of Agriculture

UPPER MIDWEST DAIRY NEWS

Victor J. Halverson, Market Administrator

Volume 26 Issue 7

Upper Midwest Marketing Area, Federal Order No. 30

July 2025

Inside This Issue:

2023 Agricultural Exports.....2

Supply Plant Systems.....3

Computation of Producer
Price Differential.....4

Utilization and Classification....5

Commodity Prices and
Market Statistics.....6

Class Prices and
Producer Prices.....7

CME Prices Stable in July

Commodity prices for NFDM and barrel cheddar cheese on the Chicago Mercantile Exchange (CME) were higher in July from the previous month, while block cheddar cheese and whey prices declined. Comparing prices to July 2024, cheese and butter prices were down sharply, while NFDM and whey prices were up. See the graph below.

The CME barrel price for cheddar cheese on July 21 was \$1.66 per pound, up $\frac{1}{4}$ ¢ from June but $26\frac{1}{2}$ ¢ below last year. The CME 40-pound block price for cheddar cheese was \$1.64 $\frac{1}{4}$ per pound, down $2\frac{1}{4}$ ¢ from last

month, and $23\frac{1}{4}$ ¢ below last year.

The CME butter price on July 21 was \$2.50 per pound, the same as last month but $57\frac{1}{2}$ ¢ below last year.

The CME price for NFDM on July 21 was \$1.30 per pound, up 4¢ from June, and $10\frac{1}{4}$ ¢ above last year.

The CME whey price on July 21 was \$0.56 $\frac{1}{4}$ per pound, down $\frac{3}{4}$ ¢ from last month but $3\frac{3}{4}$ ¢ above last year.

Upcoming Price Release Dates

July 2025 Prices

Class & Component 7-30-2025

Producer Price

Differential 8-12-2025

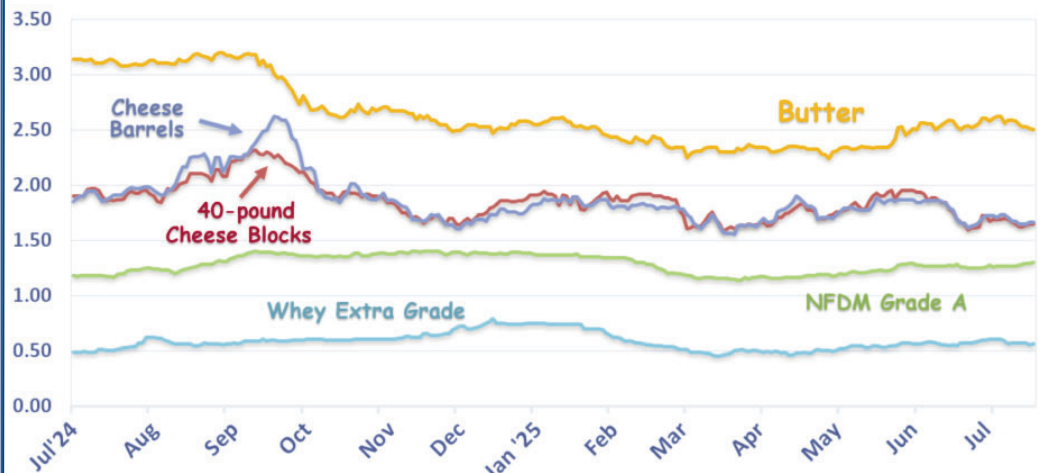
September 2025 Prices

Advanced Class &

Price Factors 8-20-2025

See Pages 6 and 7 for previously announced prices, including the July 2025 Advanced Class Prices and Price Factors.

Chicago Mercantile Exchange - Selected Dairy Commodity Prices*



* Prices depicted are dollars per pound for each day that trading occurred from July 1, 2024 through July 21, 2025.

Pool Summary

- In June, producer milk was 2.2 billion pounds, up 7.5% daily from May but 14.2% below last June.
- Class I use was 142 million pounds, down 9.6% daily from May but 1.1% above last year. In June, Class I use was 6.4% of total producer milk.
- The June 2025 Producer Price Differential (PPD) was \$0.28 per cwt.
- The F.O. 30 Statistical Uniform Price in June was \$19.10 per cwt., up \$0.46 from May, but \$0.95 below last year. [Federal Order language](#) was amended effective June 2025.
- Market statistics for May and June are shown on Pages 4 and 5.

June 2025 Producer Milk by Class

	Percent	Product Pounds	Price \$/cwt.
Class I	6.4	142,299,388	20.46
Class II	7.6	166,767,779	18.43
Class III	77.7	1,714,315,707	18.82
Class IV	8.3	182,574,248	18.30
Total		2,205,957,122	

2023 U.S. Agricultural Exports Generated Additional \$186.9 Billion in Economic Activity and Supported More than One Million Jobs

The benefits of agricultural exports to the U.S. economy far exceed the value of shipments alone. The production, processing, storage, transportation, and marketing of farm and food products bound for the export market generate additional economic output and support many full-time jobs throughout the United States.

Related statistics are estimated annually by USDA's Economic Research Service (ERS) by measuring the employment and output effects of trade in farm and food products.

In 2023, U.S. agricultural exports valued at \$175.5 billion had generated an additional \$186.9 billion in economic activity,

for a total of \$362.4 billion in economic output. See the ERS's Charts of Note below, released July 2025.

U.S. agricultural exports supported the equivalent of more than 1.05 million jobs on and off the farm in 2023. Every \$1 billion of exports is estimated to create 5,997 jobs.

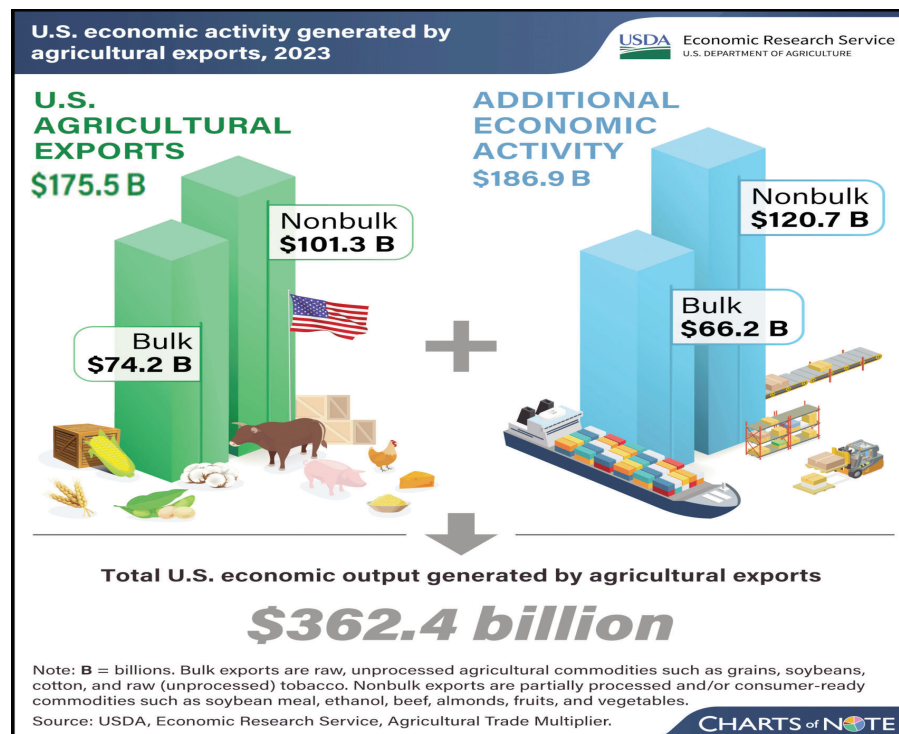
Farm activities generated by U.S. exports -- mainly crop and livestock production -- supported a total of 469,480 jobs. These jobs included labor provided by farm operators and their family members, hired farmworkers, and contract workers. Off the farm, exports supported 582,870 total jobs in the services, trade, and transportation industries.

Dairy products were among the top ten U.S. agricultural exports. In 2023, U.S. dairy exports valued at \$8.8 billion generated an additional \$22.0 billion in economic activity, for a total of \$30.8 billion in economic output and supported approximately 52,394 jobs both on and off the farm. Table 1 below also shows break down values of economic activity generated and numbers of jobs created in each export category of dairy products, classified by the World Trade Organization.

Source: ERS Agricultural Trade Multiplier, updated July 2025

(<https://www.ers.usda.gov/data-products/agricultural-trade-multipliers>)

Table 1: 2023	Fluid Milk and Butter	Cheese	Nonfat Dry Milk	Whey and modified whey, whether or not concentrated	Other dry, condensed, and evaporated dairy products	Ice cream and frozen desserts	Total
Export Value (\$)	601,477,000	2,167,892,945	2,321,498,038	565,465,060	2,877,199,526	254,202,212	8,787,734,781
Econ. Activity Generated (\$)	1,646,618,237	6,066,206,587	5,488,720,669	1,336,929,737	6,802,566,381	641,049,065	21,982,090,676
Economic Output Totaled(\$)	2,248,095,237	8,234,099,532	7,810,218,707	1,902,394,797	9,679,765,907	895,251,277	30,769,825,457
Jobs Created	4,202	15,388	12,689	3,091	15,727	1,297	52,394



Supply Plant Systems

Supply plants are defined in §1030.6, with performance requirements defined in §1030.7(c). In general, supply plants are required to ship 4.5% of their receipts to bottling plants, as revised on August 1, 2022. These performance requirements can be met as a “system”, as defined in §1030.7(f).

This provision allows two or more supply plants operated by one or more handlers to qualify for pooling by meeting the shipping requirements in the same manner as a single plant. In other words, an individual plant in a system does not need to qualify on its own, as long as the system as a whole qualifies.

Supply plants in a system must be located in the marketing area. The following supply plants requested system pooling for the period of August 2025 through July 2026. The only supply plant system in the coming year was formed by Central Milk Producers Cooperative, and this list is subject to change.

Central Milk Producers Cooperative Supply Plant System

- ◆ Dairy Farmers of America, Inc. – Fond du Lac, WI
- ◆ Cooperative Regions of Organic Producer Pools – Chaseburg, WI
- ◆ Grande Cheese Company – Rubicon, WI
- ◆ FarmFirst Dairy Cooperative – Kewaskum, WI
- ◆ Scenic Central Milk Producers Cooperative Association – Muscoda, WI
- ◆ Grassland Dairy Products, Inc. (Fairground) – Greenwood, WI
- ◆ Land O’Lakes, Inc. – Kiel, WI
- ◆ Sargento Foods, Inc. – St. Cloud, WI
- ◆ Cedar Valley Cheese, Inc. – Belgium, WI
- ◆ Sartori Company – Plymouth, WI
- ◆ Arla Foods Production, LLC – Hollandtown, WI
- ◆ Rolling Hills Dairy Producers Cooperative – Monticello, WI
- ◆ NFO, Inc. – Fond du Lac, WI
- ◆ Brewster Cheese Company – Stockton, IL
- ◆ White Hill Cheese Company, LLC – Shullsburg, WI
- ◆ Klondike Cheese Company – Monroe, WI
- ◆ V&V Supremo Foods, Inc. – Browntown, WI
- ◆ Zimmerman Cheese, Inc. – Wiota, WI
- ◆ Decatur Dairy, Inc. – Brodhead, WI
- ◆ BelGioioso Cheese, Inc. – Pulaski, WI
- ◆ Foremost Farms USA, Cooperative – Appleton, WI
- ◆ Saputo Cheese USA, Inc. – Waupun, WI
- ◆ Dairy State Cheese Company, LLC – Rudolph, WI
- ◆ Mullins Cheese, Inc. – Marshfield, WI
- ◆ Mullins Cheese, Inc. – Mosinee, WI
- ◆ Lynn Dairy, Inc. – Granton, WI
- ◆ Nasonville Dairy, Inc. – Marshfield, WI
- ◆ LaGrander’s Hillside Dairy, Inc. – Stanley, WI
- ◆ Eau Galle Cheese Factory, LLC – Durand, WI
- ◆ Burnett Dairy Cooperative, D/B/A Cady Cheese LLC – Wilson, WI
- ◆ Land O’Lakes, Inc. – Melrose, MN
- ◆ Prairie Farms Dairy, Inc. – Faribault, MN
- ◆ Grassland Dairy Products, Inc. (Main St) – Greenwood, WI
- ◆ Associated Milk Producers Inc. – Jim Falls, WI
- ◆ First District Association – Litchfield, MN
- ◆ Ellsworth Cooperative Creamery – Ellsworth, WI
- ◆ Associated Milk Producers Inc. – Paynesville, MN
- ◆ Bongards’ Creameries – Perham, MN

Computation of Producer Price Differential - June 2025

	Utilization Percentage	Product Pounds	Component Pounds	Rate	Value
Class I					
Differential Value					\$ 4,199,677.01
Product	6.4%	142,299,388			
Skim Milk			139,168,444	\$ 8.55	11,898,901.98
Butterfat			3,130,944	2.5730	8,055,918.93
Class II					
Product	7.6%	166,767,779			
Nonfat Solids			14,821,101	1.0156	15,052,310.19
Butterfat			8,522,981	2.7448	23,393,878.21
Class III					
Product	77.7%	1,714,315,707			
Protein			55,569,622	2.5328	140,746,738.60
Other Solids			99,810,744	0.2914	29,084,850.82
Butterfat			65,337,542	2.7378	178,881,122.49
Class IV					
Product	8.3%	182,574,248			
Nonfat Solids			15,654,820	1.0037	15,712,742.83
Butterfat			16,463,047	2.7378	45,072,530.08
SCC Adjustment (Class II, III, and IV)					3,642,243.18
Total Producer Milk *		2,205,957,122			\$ 475,740,914.32
Add:					
Overage					41,555.21
Inventory Reclassified					14,418.34
Other Source Milk \$.60(h) thru .60(k)					207,975.99
Subtract:					
Transportation Credit					1,323.15
Assembly Credit					113,125.49
Producer Milk Protein					180,082,482.72
Producer Milk Other Solids					37,246,127.90
Producer Milk Butterfat					255,859,768.43
Producer Milk SCC Adjustment					3,894,824.16
Total Milk and Value		2,205,957,122			\$ (1,192,787.99)
Add:					
Location Adjustment -- Producer and Unregulated Supply Plant Milk					7,113,118.55
One-Half Unobligated Balance Producer Settlement Fund					1,181,843.78
Total Value				0.321954	\$ 7,102,174.34
Subtract: Producer Settlement Fund Reserve				0.041954	925,494.40
Producer Price Differential **				\$ 0.28	\$ 6,176,679.94

* An estimated 1.8 billion pounds of milk was not pooled.

** Producer Price Differential is dollars per cwt. at the Base Zone of Cook County, Illinois.

Upper Midwest Pool Statistics - June 2025

Market Class I Differential Rate	Pool Plants	Received at Pool Plants	Diverted to Pool and Nonpool Plants	Total	Location Adjustment to Producers	Class I Differential to Handlers
Cwt.	Number	Pounds	Pounds	Pounds	Value	Pounds
\$3.10*	5	16,668,151	100,957,319	117,625,470	202,651	7,572,821
\$2.90	28	95,008,005	1,363,308,311	1,458,316,316	4,507,932	122,312,985
\$2.80	15	77,148,440	552,866,896	630,015,336	2,402,535.01	12,413,582
Total	48	188,824,596	2,017,132,526	2,205,957,122	7,113,119	142,299,388
						4,199,677

* Includes restricted data from the \$3.20 zones.

Utilization and Classification of Milk

	June 2025		May 2025	June 2024
	Product Pounds	Butterfat Pounds	Product Pounds	Product Pounds
Class I Utilization:				
Packaged Disposition				
Milk	40,526,176	1,344,162	42,253,203	36,600,003
Flavored Milk	6,146,355	206,528	6,569,362	3,095,486
Reduced Fat Milk	49,682,936	972,692	54,273,846	52,880,698
Lowfat Milk	24,702,826	236,212	29,853,113	25,201,191
Fat Free Milk	12,916,362	11,951	14,859,765	13,991,422
Flavored Reduced and Fat Free Milk	9,083,740	99,058	18,982,176	10,372,085
Buttermilk	1,596,614	19,449	1,645,745	1,564,741
Total Packaged Disposition	144,655,009	2,890,052	168,437,210	143,705,626
Total Ending Inventory	18,155,280	347,257	20,875,585	15,598,655
Bulk to Nonpool Plants	858,320	33,982	792,216	1,053,280
Shrinkage	2,557,883	329,068	628,261	998,438
Total Class I Utilization	166,226,492	3,600,359	190,733,272	161,355,999
Other Order Plants	(3,228,997)	(68,956)	(6,390,878)	(3,992,534)
Beginning Inventory	(20,861,525)	(403,123)	(21,746,386)	(16,622,716)
Reused Products	0	0	0	0
Other Source Milk	(59,030)	(1,751)	(41,560)	(31,424)
Overage	0	0	0	0
Interhandler Adjustment	222,448	4,415	110,257	(17,992)
Class I Producer Milk	142,299,388	3,130,944	162,664,705	140,691,333
Class II Utilization:				
Total Class II Utilization	170,947,685	8,704,978	70,567,420	28,418,280
Other Order Plants	(437,404)	(22,482)	(385,600)	(30,732)
Beginning Inventory	(699,530)	(118,214)	(690,996)	(126,469)
Reused Products	(3,003,458)	(1,787)	(2,871,916)	(2,861,879)
Other Source Milk	(39,514)	(39,514)	(25,616)	(116,730)
Overage	0	0	0	0
Class II Producer Milk	166,767,779	8,522,981	66,593,292	25,282,470
Class III Utilization:				
Total Class III Utilization	1,715,148,343	65,376,296	1,707,594,442	2,392,926,460
Other Order Plants	(19,110)	0	0	(51,044)
Beginning Inventory	(684,525)	(23,238)	(1,554,405)	(4,652,831)
Reused Products	0	0	0	0
Other Source Milk	(90,485)	(3,998)	(119,877)	(3,540,355)
Overage	(38,516)	(11,518)	(20,941)	(93,889)
Class III Producer Milk	1,714,315,707	65,337,542	1,705,899,219	2,384,588,341
Class IV Utilization:				
Total Class IV Utilization	357,001,785	24,119,298	373,986,248	187,467,239
Other Order Plants	(1,262,159)	(40,312)	(1,247,828)	(1,102,528)
Beginning Inventory	(8,449,192)	(498,512)	(11,513,802)	(6,469,139)
Reused Products	0	0	0	0
Other Source Milk	(164,681,875)	(7,115,788)	(175,225,697)	(160,006,522)
Overage	(34,311)	(1,639)	(20,594)	(2,687)
Class IV Producer Milk	182,574,248	16,463,047	185,978,327	19,886,363
Total Producer Milk -- All Classes	2,205,957,122	93,454,514	2,121,135,543	2,570,448,507

-- Restricted Information

Commodity Prices

Month/Year	Weighted Monthly Average Prices						Weighted Two-Week Average Prices					
	Cheddar Cheese			Nonfat			Cheddar Cheese			Nonfat		
	Blocks	Barrels	Average	Butter	Dry Milk	Dry Whey	Blocks	Barrels	Average	Butter	Dry Milk	Dry Whey
<i>Dollars per Pound</i>												
Jun 2024	1.9154	2.0345	1.9962	3.0983	1.1770	0.4249	1.9075	2.0412	1.9957	3.0862	1.1705	0.4148
Jul	1.9458	1.9635	1.9717	3.1211	1.1930	0.4487	1.9272	1.9758	1.9738	3.1337	1.2007	0.4416
Aug	1.9812	2.0573	2.0399	3.1139	1.2268	0.4864	1.9548	2.0030	1.9985	3.1061	1.2212	0.4848
Sep	2.2013	2.3319	2.2882	3.1537	1.2899	0.5321	2.1394	2.2646	2.2225	3.1745	1.2745	0.5235
Oct	2.1605	2.2760	2.2400	2.7191	1.3423	0.5588	2.1690	2.2678	2.2401	2.6840	1.3427	0.5636
Nov	1.9096	1.8973	1.9198	2.7002	1.3773	0.5922	1.9281	1.9290	1.9449	2.7265	1.3771	0.5893
Dec	1.7583	1.7326	1.7608	2.5748	1.3952	0.6353	1.7565	1.7261	1.7563	2.5916	1.3966	0.6207
Jan 2025	1.8954	1.8477	1.8851	2.6042	1.3801	0.7218	1.9004	1.8376	1.8803	2.6049	1.3907	0.7194
Feb	1.9158	1.8707	1.9077	2.4990	1.3347	0.6650	1.9093	1.8801	1.9097	2.5236	1.3587	0.6986
Mar	1.8420	1.7732	1.8215	2.3385	1.2176	0.5532	1.8977	1.8250	1.8751	2.3419	1.2461	0.5701
Apr	1.7117	1.7244	1.7361	2.3520	1.1773	0.4988	1.6978	1.7115	1.7230	2.3549	1.1801	0.4982
May	1.8177	1.8284	1.8404	2.3703	1.1925	0.5119	1.8019	-	1.8019	2.3519	1.1862	0.5080
Jun	1.9322	-	1.9322	2.4880	1.2531	0.5497	1.9373	-	1.9373	2.4685	1.2463	0.5436
Jul							1.7471	-	1.7471	2.5860	1.2786	0.5713

Month/Year	Chicago Mercantile Exchange					USDA Dairy Market News				
	Butter	Cheddar Cheese		NFDM	Whey	NFDM Low/Medium Heat		Whey Powder		
	Grade AA	Blocks	Barrels	Grade A	Extra Grade	Central & East	West	Northeast	Central	West
<i>Dollars per Pound</i>										
Jun 2024	3.0945	1.8941	1.9516	1.1916	0.4696	1.1924	1.1796	0.4257	0.4262	0.4611
Jul	3.1103	1.9126	1.9239	1.1981	0.5223	1.1960	1.1840	0.4614	0.4645	0.4841
Aug	3.1431	2.0298	2.1235	1.2607	0.5714	1.2319	1.2385	0.5075	0.5183	0.5339
Sep	3.0261	2.2333	2.4125	1.3763	0.5888	1.3381	1.3588	0.5474	0.5479	0.5508
Oct	2.6736	1.9290	1.9387	1.3628	0.6017	1.3520	1.3562	0.5681	0.5667	0.5689
Nov	2.6003	1.7184	1.7237	1.3905	0.6408	1.3772	1.3822	0.5909	0.5821	0.5884
Dec	2.5339	1.7246	1.7945	1.3824	0.7387	1.4038	1.3820	0.6544	0.6820	0.6924
Jan 2025	2.5400	1.8782	1.8523	1.3592	0.7199	1.3843	1.3665	0.6829	0.7131	0.7362
Feb	2.3932	1.8845	1.8038	1.2772	0.5629	1.2913	1.2985	0.6288	0.5955	0.6598
Mar	2.3177	1.6438	1.6432	1.1593	0.4863	1.1971	1.1863	0.5449	0.4693	0.5685
Apr	2.3176	1.7261	1.7538	1.1725	0.4885	1.1659	1.1663	0.4939	0.4580	0.5188
May	2.3708	1.8620	1.8182	1.2276	0.5406	1.2190	1.2065	0.5068	0.4957	0.5155
Jun	2.5430	1.7800	1.7669	1.2639	0.5671	1.2703	1.2629	0.5405	0.5308	0.5503

Market Statistics

Month/Year	Distributing Plants	Supply Plants	Coop .9(c) Handlers	Producers	Total Producer Milk	Est. Average Daily Delivery Per Producer	Class I Utilization	Butterfat Test	Protein Test	Other Solids Test	Weighted Average SCC
					<i>Mil. lbs.</i>	<i>Pounds</i>	<i>Percent</i>	<i>Percent</i>	<i>Percent</i>	<i>Percent</i>	<i>(000)</i>
Apr 2024	9	41	9	5,653	2,701	15,937	6.0	4.29	3.29	5.77	162
May	9	41	9	5,139	2,755	17,290	5.8	4.21	3.23	5.80	168
Jun	10	40	9	4,941	2,570	17,341	5.5	4.16	3.18	5.80	175
Jul	9	38	8	4,951	2,670	17,393	5.7	4.13	3.16	5.80	191
Aug	9	39	10	4,832	2,561	17,097	6.2	4.16	3.18	5.79	207
Sep	9	39	10	3,859	1,628	14,062	9.6	4.18	3.21	5.79	184
Oct	9	39	11	3,655	1,619	14,292	10.3	4.30	3.32	5.79	170
Nov	10	39	11	3,619	1,818	16,743	9.0	4.39	3.35	5.78	158
Dec	10	39	10	4,003	2,078	16,744	7.9	4.47	3.37	5.79	155
Jan 2025	11	38	11	4,115	2,226	17,453	7.8	4.48	3.37	5.79	153
Feb	11	38	10	4,207	2,174	18,455	7.0	4.47	3.36	5.80	153
Mar	11	38	10	4,561	2,627	18,582	5.8	4.40	3.32	5.80	153
Apr	11	38	10	4,764	2,584	18,078	6.2	4.38	3.32	5.79	154
May	10	38	10		2,121		7.7	4.30	3.27	5.81	158
Jun	10	38	10		2,206		6.4	4.24	3.22	5.79	168

Class Prices

Month/Year	Class I Price Mover				Class I Price at Cook County, IL			Class II Price			
	Butterfat	Skim Milk	ESL Adjustment	3.50%	Butterfat	Skim Milk	3.50%	Butterfat	Nonfat Solids	Skim Milk	3.50%
	<i>lb.</i>	<i>cwt.</i>	<i>cwt.</i>	<i>cwt.</i>	<i>lb.</i>	<i>cwt.</i>	<i>cwt.</i>	<i>lb.</i>	<i>lb.</i>	<i>cwt.</i>	<i>cwt.</i>
Jun 2024	3.4512	8.29	-	20.08	3.4692	10.09	21.88	3.5514	1.0556	9.50	21.60
Jul	3.5297	9.07	-	21.11	3.5477	10.87	22.91	3.5790	1.0700	9.63	21.82
Aug	3.5872	9.08	-	21.32	3.6052	10.88	23.12	3.5702	1.1000	9.90	22.05
Sep	3.5538	9.49	-	21.60	3.5718	11.29	23.40	3.6184	1.1211	10.09	22.40
Oct	3.6366	10.82	-	23.17	3.6546	12.62	24.97	3.0921	1.1733	10.56	21.01
Nov	3.0426	12.31	-	22.53	3.0606	14.11	24.33	3.0693	1.2411	11.17	21.52
Dec	3.0941	10.98	-	21.43	3.1121	12.78	23.23	2.9174	1.2744	11.47	21.28
Jan 2025	2.9307	10.49	-	20.38	2.9487	12.29	22.18	2.9530	1.2944	11.65	21.58
Feb	2.9468	11.35	-	21.27	2.9648	13.15	23.07	2.8256	1.2889	11.60	21.08
Mar	2.8484	11.45	-	21.02	2.8664	13.25	22.82	2.6312	1.2567	11.31	20.12
Apr	2.6284	10.75	-	19.57	2.6464	12.55	21.37	2.6476	1.1456	10.31	19.22
May	2.6441	9.45	-	18.37	2.6621	11.25	20.17	2.6697	1.0800	9.72	18.72
Jun	2.5730	8.55	1.38	17.26	2.6050	11.75	20.46	2.7448	1.0156	9.14	18.43
Jul	2.7142	9.66	1.14	18.82	2.7462	12.86	22.02		1.0744	9.67	
Aug	2.8565	9.26	0.57	18.93	2.8885	12.46	22.13		1.1067	9.96	

Month/Year	Class III Price					Class IV Price			
	Butterfat	Protein	Other Solids	Skim Milk	3.50%	Butterfat	Nonfat Solids	Skim Milk	3.50%
	<i>lb.</i>	<i>lb.</i>	<i>lb.</i>	<i>cwt.</i>	<i>cwt.</i>	<i>lb.</i>	<i>lb.</i>	<i>cwt.</i>	<i>cwt.</i>
Jun 2024	3.5444	2.0546	0.2326	7.74	19.87	3.5444	0.9991	8.99	21.08
Jul	3.5720	1.9466	0.2571	7.55	19.79	3.5720	1.0149	9.13	21.31
Aug	3.5632	2.1756	0.2959	8.49	20.66	3.5632	1.0484	9.44	21.58
Sep	3.6114	2.9249	0.3430	11.09	23.34	3.6114	1.1109	10.00	22.29
Oct	3.0851	3.3238	0.3705	12.49	22.85	3.0851	1.1628	10.47	20.90
Nov	3.0623	2.3160	0.4049	9.57	19.95	3.0623	1.1974	10.78	21.12
Dec	2.9104	1.9637	0.4493	8.74	18.62	2.9104	1.2151	10.94	20.74
Jan 2025	2.9460	2.3267	0.5384	10.39	20.34	2.9460	1.2002	10.80	20.73
Feb	2.8186	2.5337	0.4799	10.69	20.18	2.8186	1.1552	10.40	19.90
Mar	2.6242	2.4606	0.3647	9.78	18.62	2.6242	1.0393	9.35	18.21
Apr	2.6406	2.1682	0.3087	8.54	17.48	2.6406	0.9994	8.99	17.92
May	2.6627	2.4810	0.3222	9.59	18.57	2.6627	1.0145	9.13	18.13
Jun	2.7378	2.5328	0.2914	9.57	18.82	2.7378	1.0037	9.03	18.30

Producer Prices

Month/Year	Producer Price Differential	Statistical Uniform Price (at 3.50%)	Butterfat Price	Protein Price	Other Solids Price	SCC Adjustment Rate	Producer Mailbox Price (at test)
	<i>\$ per cwt.</i>	<i>\$ per cwt.</i>	<i>\$ per lb.</i>	<i>\$ per lb.</i>	<i>\$ per lb.</i>	<i>\$ per cwt.</i>	<i>\$ per cwt.</i>
Apr 2024	0.45	15.95	3.3309	0.8345	0.2367	0.00077	18.47
May	0.19	18.74	3.4636	1.7349	0.2181	0.00094	21.28
Jun	0.18	20.05	3.5444	2.0546	0.2326	0.00100	21.79
Jul	0.25	20.04	3.5720	1.9466	0.2571	0.00099	21.63
Aug	0.20	20.86	3.5632	2.1756	0.2959	0.00102	23.08
Sep	(0.24)	23.10	3.6114	2.9249	0.3430	0.00114	25.51
Oct	(0.47)	22.38	3.0851	3.3238	0.3705	0.00112	24.91
Nov	0.38	20.33	3.0623	2.3160	0.4049	0.00096	23.04
Dec	0.36	18.98	2.9104	1.9637	0.4493	0.00088	23.51
Jan 2025	0.13	20.47	2.9460	2.3267	0.5384	0.00094	23.77
Feb	0.13	20.31	2.8186	2.5337	0.4799	0.00095	23.43
Mar	0.20	18.82	2.6242	2.4606	0.3647	0.00091	21.55
Apr	0.27	17.75	2.6406	2.1682	0.3087	0.00087	20.40
May	0.07	18.64	2.6627	2.4810	0.3222	0.00092	
Jun	0.28	19.10	2.7378	2.5328	0.2914	0.00097	

Summary of Federal Order Data - June 2025

Federal Order Number / Name	Producer Deliveries	Class I Producer Receipts	Class I Utilization	Class I Price	Producer Price Differential	Uniform or Statistical Uniform Price at 3.5% Butterfat		
						FOB Market	FOB Cook Cty. Illinois	Change From Previous Year
	Thousand Pounds		Percent	Dollars per Cwt.			Dollars per Cwt.	
1 Northeast	2,279,095	593,917	26.1	\$ 22.36	\$1.34	\$ 20.16	\$ 18.71	(\$1.67)
5 Appalachian	403,929	273,951	67.8	22.86	n/a	21.94	20.34	(0.90)
6 Florida	186,707	144,347	77.3	24.06	n/a	22.94	19.34	(1.78)
7 Southeast	280,897	186,051	66.2	23.06	n/a	22.18	20.18	(1.05)
30 Upper Midwest	2,205,957	142,299	6.5	20.46	0.28	19.10	19.10	(0.95)
32 Central	1,100,426	309,654	28.1	20.46	0.47	19.29	19.09	(1.07)
33 Mideast	1,792,629	516,806	28.8	21.06	0.55	19.37	19.17	(1.46)
51 California	2,307,495	371,595	16.1	20.06	0.11	18.93	18.63	(1.73)
124 Pacific Northwest	496,077	103,368	20.8	19.96	0.06	18.88	18.78	(1.69)
126 Southwest	757,665	283,310	37.4	20.96	0.52	19.34	18.14	(1.86)
131 Arizona	319,230	99,749	31.2	19.86	n/a	19.00	18.45	(2.15)
All Market Average or Total *	12,130,106	3,025,047	24.9					

n/a = Not applicable.

* May not add due to rounding.

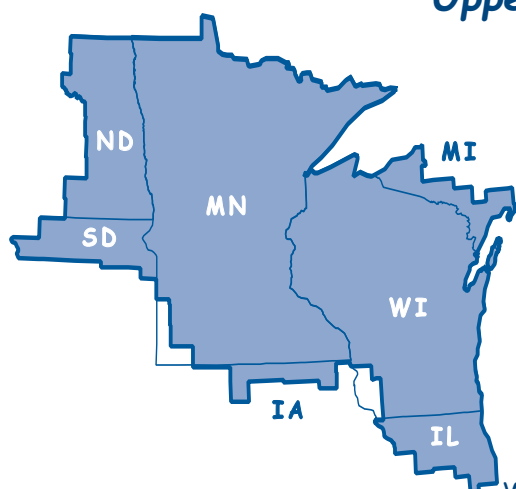
In accordance with Federal civil rights law and U.S. Department of Agriculture (USDA) civil rights regulations and policies, the USDA, its Agencies, offices, and employees, and institutions participating in or administering USDA programs are prohibited from discriminating based on race, color, national origin, religion, sex, disability, age, marital status, family/parental status, income derived from a public assistance program, political beliefs, or reprisal or retaliation for prior civil rights activity, in any program or activity conducted or funded by USDA (not all bases apply to all programs). Remedies and complaint filing deadlines vary by program or incident.

Persons with disabilities who require alternative means of communication for program information (e.g., Braille, large print, audiotape, American Sign Language, etc.) should contact the responsible Agency or USDA's TARGET Center at (202) 720-2600 (voice and TTY) or contact USDA through the Federal Relay Service at 711. Additionally, program information may be made available in languages other than English.

To file a program discrimination complaint, complete the USDA Program Discrimination Complaint Form, AD-3027, found online at [How to File a Program Discrimination Complaint](#) and at any USDA office or write a letter addressed to USDA and provide in the letter all of the information requested in the form. To request a copy of the complaint form, call (866) 632-9992. Submit your completed form or letter to USDA by: (1) mail: U.S. Department of Agriculture, Office of the Assistant Secretary for Civil Rights, 1400 Independence Avenue, SW, Washington, D.C. 20250-9410; (2) fax: (202) 690-7442; or (3) email: program.intake@usda.gov.

USDA is an equal opportunity provider, employer, and lender.

Upper Midwest Marketing Area F.O. 30



Phone: (952) 831-5292

Fax: (952) 831-8249

Website: www.fmma30.com

Happy July
National Ice Cream Month!



Image by Freepik