



Federal Milk Market Administrator
U.S. Department of Agriculture

UPPER MIDWEST DAIRY NEWS

Victor J. Halverson, Market Administrator

Volume 27 Issue 6

Upper Midwest Marketing Area, Federal Order No. 30

June 2026

Inside This Issue:

2025 Annual Dairy Product Summary.....2

Whole Milk Share Rises amid Long-term Decline in Total Fluid Milk Sales.....2

Computation of Producer Price Differential.....4

Utilization and Classification.....5

Commodity Prices and Market Statistics.....6

Class Prices and Producer Prices.....7

NFDM Tumbles in June as Other CME Dairy Prices Hold Steady

Commodity dairy prices on the Chicago Mercantile Exchange (CME) held steady with slight movements in June, except for the NFDM price which was falling sharply. Comparing prices to last June, barrel, block, and butter prices were down while NFDM and whey prices were up. See the graph below.

The CME barrel price for cheddar cheese on June 15 was \$1.42 per pound, down 13½¢ from May and 37¢ below last year. The CME 40-pound block price for cheddar cheese was \$1.47½ per pound, down 8¢ from

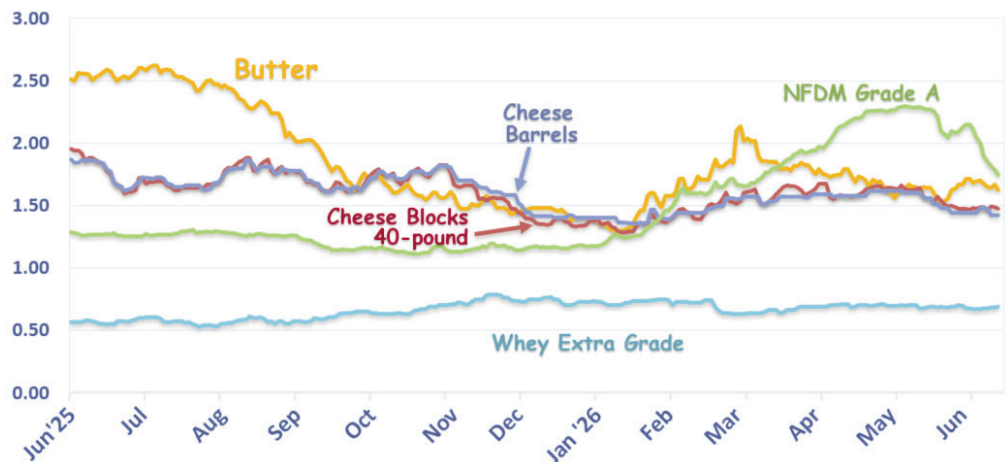
last month and 30½¢ below last year.

The CME butter price on June 15 was \$1.62½ per pound, 1½¢ below last month and 96¾¢ below last year.

The CME price for NFDM on June 15 was \$1.74½ per pound, down 52¾¢ from May but up 47½¢ above last year.

The CME whey price on June 15 was \$0.68¾ per pound, up ¼¢ from last month and 14¢ above last year.

Chicago Mercantile Exchange - Selected Dairy Commodity Prices*



* Prices depicted are dollars per pound for each day that trading occurred from June 1, 2025 through June 15, 2026.

Upcoming Price Release Dates

June 2026 Prices

Class & Component	07-01-2026
Producer Price	
Differential	07-11-2026

August 2026 Prices

Advanced Class & Price Factors	07-22-2026
--------------------------------	------------

See Pages 6 and 7 for previously announced prices, including the June and July 2026 Advanced Class Prices and Price Factors.

Pool Summary

- In May, producer milk was 2.7 billion pounds, up 3.5% daily from April and 25.8% above last May.
- Class I use was 158 million pounds, down 5.9% daily from April and 2.9% below last year. In May, Class I use was 5.9% of total producer milk.
- The May 2026 Producer Price Differential (PPD) was \$0.69 per cwt.
- The F.O. 30 Statistical Uniform Price in May was \$17.61 per cwt., up \$0.18 from April, but \$1.03 below last year. [Federal Order Language](#) was amended effective June 2025 and December 2025.
- Market statistics for April and May are shown on Pages 4 and 5.

May 2026 Producer Milk by Class

	Percent	Product Pounds	Price \$/cwt.
Class I	5.9	157,918,004	23.35
Class II	1.1	28,850,302	20.28
Class III	92.1	2,459,704,698	16.92
Class IV	0.9	22,771,357	22.32
Total		2,669,244,361	

2025 Annual Dairy Products Summary

The National Agricultural Statistics Service (NASS) recently published the “Dairy Products 2025 Summary”, which details the monthly production of specified dairy products in the United States.

The table on Page 3 shows annual production and number of plants manufacturing selected dairy products in the United States for 2024 and 2025. Selected items from the table are summarized below. A breakdown of the information by state is included in the report, which is available on the NASS website (see URL in *Source*, Page 3).

Butter production in the United States during 2025 totaled 2.39 billion pounds, 6.7% above 2024. California accounted for 28.4% of butter production in 2024.

Total cheese production in 2025, excluding cottage cheeses, was 14.8 billion pounds, 4.0% above 2024. Wisconsin was the leading cheese producing state with 24.6% of the production, followed by California with 17.2%. Idaho, New Mexico, New York, and Minnesota were next with closely tied percentages of 7.1%, 6.1%, 6.0% and 5.1% respectively.

American type cheese production in 2025 was 5.83 billion pounds, 4.6% above 2024. American cheese accounted for 39.4% of total cheese production in 2025. Wisconsin was the leading American cheese producing state with 18.2% of production, followed by Minnesota and California with 12.4%

and 9.7%, respectively.

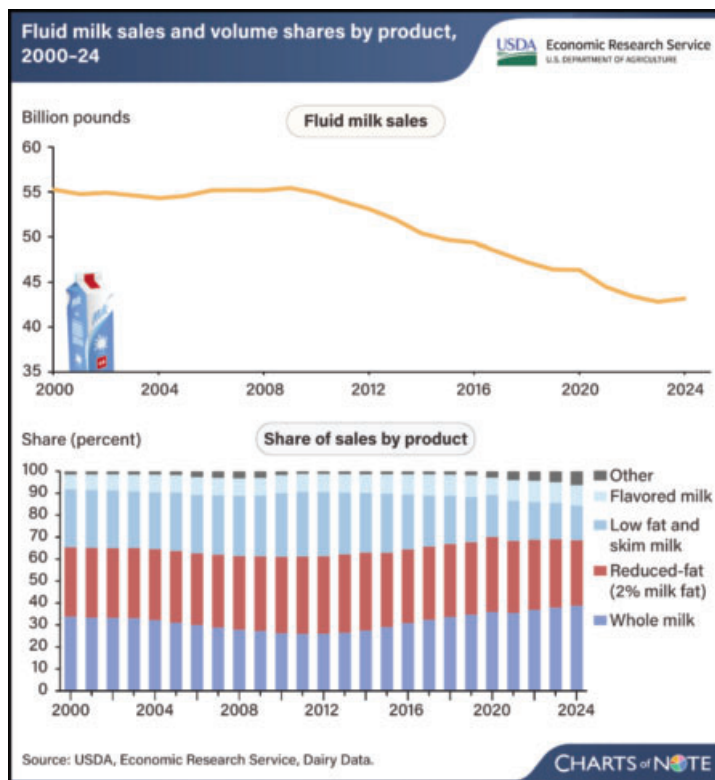
Italian cheese varieties production of 6.33 billion pounds in 2025 was 5.1% above 2024. Italian Cheese accounted for 42.8% of total cheese production in 2025. Mozzarella accounted for 79.1% of the Italian production, followed by Parmesan and Provolone with 8.3% and 6.2%, respectively. Wisconsin was the leading Italian cheese producing state with 28.4% of production, followed by California with 27.4%.

Nonfat dry milk production for human food of 1.66 billion pounds in 2025 was 0.2% above 2024. This product’s volume often varies significantly from year to year, offsetting with changes to volumes of dry whole milk and skim milk powder production. California was the leading state with 44.0% of total production.

Dry whey production for human consumption of 818 million pounds in 2025 was 2.5% above 2024. Wisconsin was the leading state with 32.8% of total production. New York also accounted for a large percentage of the dry whey production with 15.8%.

Combined Ice Cream and Ice Cream Mix production (regular and lowfat) totaled 1.9 billion gallons and was down 9.4% from 2024. California was the leading state with 9.2% of total production.

Whole Milk Share Rises amid Long-term Decline in Total Fluid Milk Sales



This Charts of Note is from the USDA, Economic Research Service (ERS). It depicts the rise in the whole milk’s share of the fluid market, from a low of 26 percent in 2012 to 39 percent in 2024, despite the broader downward trend in total milk sales which have declined over the past 15 years. The increase in share of sales for whole milk suggests that consumer concerns over dairy fat have diminished. This growth contrasts with other categories of fluid milk.

From 2005 to 2017, reduced-fat milk was the dominant category, accounting for about 34 percent of sales. Its share has declined since 2017, reaching about 30 percent in 2024. Likewise, the aggregate low-fat and skim milk category has declined since 2015, accounting for 16 percent in 2024, down more than 13 percent from recent highs in 2010 and 2011. The flavored milk and other fluid milk products (including eggnog and buttermilk) categories comprise relatively smaller sales volumes and shares, collectively averaging about 13 percent over the last 5 years.

Recent data from USDA, Agricultural Marketing Service indicate that the long-term decline in total fluid milk sales likely continued in 2025, while whole milk maintained its share of the market. Information about fluid beverage milk sales quantities by product is available in the ERS [Dairy Data](https://ers.usda.gov/data-products/dairy-data/).

Read full description at <https://ers.usda.gov/data-products/charts-of-note/chart-detail?chartId=113979>

Annual Production and Number of Plants Manufacturing Selected Dairy Products in the United States, 2024 and 2025

Product	2025		2024		Change from 2024 Percent
	Plants Number	Production 1,000 lbs.	Plants Number	Production 1,000 lbs.	
Butter	98	2,386,405	97	2,235,593	+ 6.7
Cheese					
American Types					
Cheddar	246	4,003,690	249	3,785,308	+ 5.8
Other American ^{1/}	141	1,828,661	139	1,791,228	+ 2.1
Total American	262	5,832,351	268	5,576,556	+ 4.6
Swiss	69	321,402	69	329,155	+ 7.6
Muenster	43	209,181	41	210,313	+ 3.9
Italian Varieties					
Mozzarella	117	5,006,361	114	4,788,538	+ 4.5
Other Italian	n/a	1,322,811	n/a	1,233,718	+ 7.2
Total Italian	180	6,329,172	183	6,022,256	+ 5.1
Cream & Neufchatel	34	1,138,906	30	1,156,546	- 1.5
Hispanic	64	478,537	62	458,849	+ 10.3
All Other Types	n/a	490,515	n/a	483,750	+ 1.4
Total Cheese ^{2/}	502	14,800,064	500	14,237,425	+ 4.0
Cottage Cheese					
Curd ^{3/}	51	514,274	47	452,332	+ 14.7
Creamed ^{4/}	49	470,808	48	421,688	+ 11.6
Lowfat ^{5/}	44	422,193	42	384,558	+ 14.7
Dry Whey, Human Consumption	29	818,227	28	798,185	+ 2.5
Bulk Condensed Milk					
Whole					
Sweetened	4	222,811	4	194,340	+ 14.7
Unsweetened	6	19,092	6	31,945	- 40.2
Skim					
Sweetened	5	158,789	4	158,378	+ 0.3
Unsweetened	38	1,346,160	40	1,409,461	- 4.5
Dry Milk					
Dry Whole Milk	14	128,713	11	111,364	+ 15.6
Nonfat Dry Milk, Human	43	1,657,581	43	1,654,655	+ 0.2
Skim Milk Powder ^{6/}	15	504,322	17	599,350	- 15.9
Milk Protein Concentrate ^{7/}	11	294,202	11	333,000	-11.7
Dry Buttermilk	23	144,881	21	146,641	- 1.2
Ice Cream ^{8/}					
Regular, Total	n/a	845,115	n/a	931,064	- 9.2
Lowfat, Total	n/a	380,879	n/a	485,286	- 21.5
Ice Cream Mix ^{8/}					
Regular	267	454,453	257	477,139	- 0.8
Lowfat ^{9/}	128	237,197	130	229,434	- 2.7
Sour Cream	90	1,520,758	92	1,546,805	- 1.7
Yogurt, Plain and Flavored	154	5,288,585	154	4,874,479	+ 8.5

^{1/} Includes Cheddar, Colby, washed curd, stirred curd, Monterey, and Jack. ^{2/} Excluding cottage cheese.

^{3/} Mostly used for processing into creamed or lowfat cottage cheese. ^{4/} Fat content 4.0% or more. ^{5/} Fat content less than 4.0%.

^{6/} Includes protein standardized and blends. ^{7/} Dry milk protein concentrate, 40.0% to 89.9%.

^{8/} Ice Cream and Ice Cream Mix volume is in gallons rather than pounds. ^{9/} Includes milkshake mix. n/a = not available.

Source: "Dairy Products 2026 Summary", National Agricultural Statistics Service (NASS), USDA,
<https://esmis.nal.usda.gov/sites/default/release-files/795874/daryan26.pdf>.

Computation of Producer Price Differential - May 2026

	Utilization Percentage	Product Pounds	Component Pounds	Rate	Value
Class I					
Differential Value					\$ 4,672,175.35
Product	5.9%	157,918,004			
Skim Milk			154,626,151	\$14.12	21,833,212.54
Butterfat			3,291,853	1.8649	6,138,976.67
Class II					
Product	1.1%	28,850,302			
Nonfat Solids			2,246,444	1.5935	3,579,708.52
Butterfat			5,024,204	1.7071	8,576,818.66
Class III					
Product	92.1%	2,459,704,698			
Protein			81,991,176	2.7477	225,287,154.28
Other Solids			143,244,202	0.3840	55,005,773.58
Butterfat			97,578,461	1.7001	165,893,141.59
Class IV					
Product	0.9%	22,771,357			
Nonfat Solids			1,342,644	1.8232	2,447,908.54
Butterfat			8,577,466	1.7001	14,582,549.95
SCC Adjustment (Class II, III, and IV)					3,955,250.64
Total Producer Milk *		2,669,244,361			\$ 511,972,670.32
Add:					
Overage					75,529.16
Inventory Reclassified					(92,438.51)
Other Source Milk §.60(h) thru .60(k)					(92,190.43)
Subtract:					
Transportation Credit					4,822.10
Assembly Credit					125,851.47
Producer Milk Protein					243,441,749.49
Producer Milk Other Solids					59,486,345.47
Producer Milk Butterfat					194,613,818.30
Producer Milk SCC Adjustment					4,212,696.84
Total Milk and Value		2,669,244,361			\$ 9,978,286.87
Add:					
Location Adjustment -- Producer and Unregulated Supply Plant Milk					8,588,836.57
One-Half Unobligated Balance Producer Settlement Fund					1,064,011.95
Total Value				0.735457	\$19,631,135.39
Subtract: Producer Settlement Fund Reserve				0.045457	1,213,349.30
Producer Price Differential **				\$0.69	\$ 18,417,786.09

* An estimated 1.3 billion pounds of milk was not pooled.

** Producer Price Differential is dollars per cwt. at the Base Zone of Cook County, Illinois.

Upper Midwest Pool Statistics - May 2026

Market Class I Differential Rate	Pool Plants	Received at Pool Plants	Diverted to Pool and Nonpool Plants	Total	Location Adjustment to Producers	Class I	Differential to Handlers
<i>Cwt.</i>	<i>Number</i>	<i>Pounds</i>	<i>Pounds</i>	<i>Pounds</i>	<i>Value</i>	<i>Pounds</i>	<i>Value</i>
\$3.10*	6	20,995,619	254,531,072	275,526,692	676,459	11,109,840	353,063
\$2.90	26	166,500,999	1,567,385,928	1,733,886,927	5,381,440	130,839,322	3,853,586
\$2.80	15	58,218,306	601,612,436	659,830,742	2,530,938	15,968,842	465,526
Total	47	245,714,924	2,423,529,436	2,669,244,361	8,588,837	157,918,004	4,672,175

* Includes restricted data from the \$3.20 and \$3.30 zones.

Utilization and Classification of Milk

	May 2026		April 2026	May 2025
	Product Pounds	Butterfat Pounds	Product Pounds	Product Pounds
Class I Utilization:				
Packaged Disposition				
Milk	44,240,346	1,475,029	44,177,021	42,253,203
Flavored Milk	8,204,793	279,656	7,242,100	6,569,362
Reduced Fat Milk	52,908,856	1,038,116	53,468,462	54,273,846
Lowfat Milk	26,275,688	252,075	27,988,604	29,853,113
Fat Free Milk	13,443,372	13,775	13,460,947	14,859,765
Flavored Reduced and Fat Free Milk	16,731,872	132,535	19,840,907	18,982,176
Buttermilk	1,643,908	19,049	1,643,927	1,645,745
Total Packaged Disposition	163,439,835	3,210,235	167,821,968	168,437,210
Total Ending Inventory	19,557,073	404,829	21,352,487	20,875,585
Bulk to Nonpool Plants	596,178	22,803	542,993	792,216
Shrinkage	848,040	159,055	1,377,233	628,261
Total Class I Utilization	184,441,126	3,796,922	191,094,681	190,733,272
Other Order Plants	(5,093,244)	(93,413)	(6,893,927)	(6,390,878)
Beginning Inventory	(21,352,487)	(411,967)	(21,802,764)	(21,746,386)
Reused Products	0	0	0	0
Other Source Milk	(35,412)	(782)	(37,015)	(41,560)
Overage	0	0	0	0
Interhandler Adjustment	(41,979)	1,093	26,208	110,257
Class I Producer Milk	157,918,004	3,291,853	162,387,183	162,664,705
Class II Utilization:				
Total Class II Utilization	33,522,064	5,197,068	34,443,152	70,567,420
Other Order Plants	(53,846)	(53,846)	(1,230,119)	(385,600)
Beginning Inventory	(2,017,203)	(101,220)	(3,095,256)	(690,996)
Reused Products	(2,383,606)	(1,343)	(2,495,187)	(2,871,916)
Other Source Milk	(16,455)	(16,455)	(36,465)	(25,616)
Overage	(200,652)	0	(24,318)	0
Class II Producer Milk	28,850,302	5,024,204	27,561,807	66,593,292
Class III Utilization:				
Total Class III Utilization	2,465,270,593	97,668,664	2,291,534,728	1,707,594,442
Other Order Plants	(224,739)	(37,224)	(1,125,024)	0
Beginning Inventory	(2,908,564)	(49,928)	(5,652,983)	(1,554,405)
Reused Products	0	0	0	0
Other Source Milk	(2,415,333)	(1,391)	(309,306)	(119,877)
Overage	(17,259)	(1,660)	(11,064)	(20,941)
Class III Producer Milk	2,459,704,698	97,578,461	2,284,430,351	1,705,899,219
Class IV Utilization:				
Total Class IV Utilization	204,942,429	17,133,087	199,649,263	373,986,248
Other Order Plants	(7,090,467)	(245,403)	(3,468,087)	(1,247,828)
Beginning Inventory	(4,600,079)	(440,207)	(5,799,684)	(11,513,802)
Reused Products	0	0	0	0
Other Source Milk	(170,300,095)	(7,863,088)	(169,262,788)	(175,225,697)
Overage	(180,431)	(6,923)	(32,792)	(20,594)
Class IV Producer Milk	22,771,357	8,577,466	21,085,912	185,978,327
Total Producer Milk -- All Classes	2,669,244,361	114,471,984	2,495,465,253	2,121,135,543

Commodity Prices

Month/Year	Weighted Monthly Average Prices						Weighted Two-Week Average Prices					
	Cheddar Cheese			Nonfat			Cheddar Cheese			Nonfat		
	Blocks	Barrels	Average	Butter	Dry Milk	Dry Whey	Blocks	Barrels	Average	Butter	Dry Milk	Dry Whey
	<i>Dollars per Pound</i>						<i>Dollars per Pound</i>					
May 2025	1.8177	1.8284	1.8404	2.3703	1.1925	0.5119	1.8019	-	1.8019	2.3519	1.1862	0.5080
Jun	1.9322	-	1.9322	2.4880	1.2531	0.5497	1.9373	-	1.9373	2.4685	1.2463	0.5436
Jul	1.7634	-	1.7634	2.5753	1.2783	0.5670	1.7471	-	1.7471	2.5860	1.2786	0.5713
Aug	1.7529	-	1.7529	2.4778	1.2820	0.5779	1.7205	-	1.7205	2.5120	1.2871	0.5814
Sep	1.8066	-	1.8066	2.0377	1.2265	0.5782	1.8470	-	1.8470	2.1992	1.2791	0.5766
Oct	1.7384	-	1.7384	1.7344	1.1601	0.5930	1.7245	-	1.7245	1.7617	1.1546	0.5886
Nov	1.7419	-	1.7419	1.6360	1.1609	0.6415	1.7920	-	1.7920	1.6239	1.1611	0.6230
Dec	1.5271	-	1.5271	1.5287	1.1541	0.6893	1.5777	-	1.5777	1.5419	1.1551	0.6844
Jan 2026	1.4003	-	1.4003	1.4266	1.1921	0.6986	1.4078	-	1.4078	1.4201	1.1860	0.7040
Feb	1.4338	-	1.4338	1.6966	1.3726	0.6931	1.4083	-	1.4083	1.6217	1.3156	0.6973
Mar	1.5607	-	1.5607	1.8969	1.5741	0.6724	1.5297	-	1.5297	1.8970	1.5431	0.6840
Apr	1.6427	-	1.6427	1.7707	1.7788	0.6443	1.6522	-	1.6522	1.7672	1.7724	0.6474
May	1.6577	-	1.6577	1.6311	2.0809	0.6396	1.6644	-	1.6644	1.6463	2.0589	0.6409
Jun							1.5975	-	1.5975	1.6372	1.9669	0.6422

Month/Year	Chicago Mercantile Exchange					USDA Dairy Market News				
	Butter	Cheddar Cheese		NFDM	Whey	NFDM Low/Medium Heat		Whey Powder		
	Grade AA	Blocks	Barrels	Grade A	Extra Grade	Central & East	West	Northeast	Central	West
	<i>Dollars per Pound</i>									
May 2025	2.3708	1.8620	1.8182	1.2276	0.5406	1.2190	1.2065	0.5068	0.4957	0.5155
Jun	2.5430	1.7800	1.7669	1.2639	0.5671	1.2703	1.2629	0.5405	0.5308	0.5503
Jul	2.5314	1.6627	1.6764	1.2788	0.5655	1.2745	1.2701	0.5509	0.5545	0.5730
Aug	2.2886	1.8061	1.7935	1.2651	0.5740	1.2793	1.2680	0.5610	0.5536	0.5712
Sep	1.8395	1.6670	1.6638	1.1752	0.6100	1.2243	1.2130	0.5683	0.5569	0.5901
Oct	1.6247	1.7597	1.7610	1.1396	0.6583	1.1752	1.1490	0.5718	0.5844	0.6123
Nov	1.4992	1.5822	1.6458	1.1597	0.7476	1.1850	1.1442	0.6244	0.6653	0.6856
Dec	1.4431	1.3701	1.4193	1.1655	0.7344	1.1793	1.1535	0.6659	0.6742	0.7110
Jan 2026	1.4134	1.3451	1.3884	1.2801	0.7258	1.2368	1.2321	0.6955	0.6932	0.7061
Feb	1.7242	1.4684	1.4663	1.6114	0.7021	1.5679	1.5463	0.6858	0.6739	0.7172
Mar	1.8885	1.5938	1.5590	1.7968	0.6550	1.7932	1.7541	0.6559	0.6425	0.6818
Apr	1.7224	1.6144	1.5902	2.1474	0.6987	2.0959	2.0639	0.6495	0.6491	0.7366
May	1.6110	1.5744	1.5460	2.2150	0.6906	2.2588	2.2490	0.6433	0.6493	0.7253

Market Statistics

Month/Year	Distributing Plants	Supply Plants	Coop .9(c) Handlers	Producers	Total Producer Milk	Est. Average Daily Delivery Per Producer	Class I Utilization	Butterfat Test	Protein Test	Other Solids Test	Weighted Average SCC
					Mil. lbs.	Pounds	Percent	Percent	Percent	Percent	
										(000)	
Mar 2025	11	38	10	4,561	2,627	18,582	5.8	4.40	3.32	5.80	153
Apr	11	38	10	4,764	2,584	18,078	6.2	4.38	3.32	5.79	154
May	10	38	10	5,139	2,121	13,315	7.7	4.30	3.27	5.81	158
Jun	10	38	10	4,337	2,206	16,955	6.4	4.24	3.22	5.79	168
Jul	9	38	11	4,649	2,290	15,891	6.7	4.12	3.14	5.80	192
Aug	9	37	11	4,933	2,531	16,551	6.2	4.16	3.20	5.79	201
Sep	10	37	11	4,167	2,084	16,667	7.8	4.25	3.26	5.80	183
Oct	10	37	10	3,362	1,527	14,653	11.3	4.35	3.33	5.79	171
Nov	10	38	10	3,046	1,236	13,528	13.0	4.49	3.43	5.76	163
Dec	11	37	12	3,036	1,201	12,761	14.7	4.55	3.45	5.78	159
Jan 2026	11	37	11	3,298	1,445	14,129	12.3	4.52	3.42	5.78	160
Feb	10	37	11	3,264	1,549	16,944	10.0	4.46	3.40	5.79	156
Mar	10	37	12	4,195	2,233	17,169	7.5	4.41	3.39	5.77	158
Apr	10	37	12		2,495		6.5	4.35	3.34	5.80	161
May	10	37	12		2,669		5.9	4.29	3.32	5.80	160

Class Prices

Month/Year	Class I Price Mover				Class I Price at Cook County, IL			Class II Price			
	Butterfat	Skim Milk	ESL Adjustment	3.50%	Butterfat	Skim Milk	3.50%	Butterfat	Nonfat Solids	Skim Milk	3.50%
	<i>lb.</i>	<i>cwt.</i>	<i>cwt.</i>	<i>cwt.</i>	<i>lb.</i>	<i>cwt.</i>	<i>cwt.</i>	<i>lb.</i>	<i>lb.</i>	<i>cwt.</i>	<i>cwt.</i>
May 2025	2.6441	9.45	-	18.37	2.6621	11.25	20.17	2.6697	1.0800	9.72	18.72
Jun	2.5730	8.55	1.38	17.26	2.6050	11.75	20.46	2.7448	1.0156	9.14	18.43
Jul	2.7142	9.66	1.14	18.82	2.7462	12.86	22.02	2.8505	1.0744	9.67	19.31
Aug	2.8565	9.26	0.57	18.93	2.8885	12.46	22.13	2.7325	1.1067	9.96	19.18
Sep	2.7669	9.34	0.53	18.70	2.7989	12.54	21.90	2.1925	1.1156	10.04	17.39
Oct	2.3881	10.03	0.97	18.04	2.4201	13.23	21.24	1.8322	1.1067	9.96	16.02
Nov	1.8583	10.62	0.01	16.75	1.8903	13.82	19.95	1.7131	0.9833	8.85	14.54
Dec	1.6914	12.74	(0.91)	18.21	1.7234	15.94	21.41	1.5831	0.9882	9.19	14.41
Jan 2026	1.5921	11.17	(0.17)	16.35	1.6241	14.37	19.55	1.4595	0.9817	9.13	13.92
Feb	1.4446	9.99	0.57	14.70	1.4766	13.19	17.90	1.7864	1.0129	9.42	15.34
Mar	1.6887	9.91	0.80	15.47	1.7207	13.11	18.67	2.0290	1.1409	10.61	17.34
Apr	2.0221	12.00	(0.25)	18.66	2.0541	15.20	21.86	1.8762	1.3656	12.70	18.82
May	1.8649	14.12	(0.49)	20.15	1.8969	17.32	23.35	1.7071	1.5935	14.82	20.28
Jun	1.7185	16.75	(1.51)	22.18	1.7505	19.95	25.38		1.8763	17.45	
Jul	1.7075	15.91	(1.46)	21.33	1.7395	19.11	24.53		1.7860	16.61	

Month/Year	Class III Price					Class IV Price			
	Butterfat	Protein	Other Solids	Skim Milk	3.50%	Butterfat	Nonfat Solids	Skim Milk	3.50%
	<i>lb.</i>	<i>lb.</i>	<i>lb.</i>	<i>cwt.</i>	<i>cwt.</i>	<i>lb.</i>	<i>lb.</i>	<i>cwt.</i>	<i>cwt.</i>
May 2025	2.6627	2.4810	0.3222	9.59	18.57	2.6627	1.0145	9.13	18.13
Jun	2.7378	2.5328	0.2914	9.57	18.82	2.7378	1.0037	9.03	18.30
Jul	2.8435	1.8730	0.3092	7.63	17.32	2.8435	1.0286	9.26	18.89
Aug	2.7255	1.9646	0.3204	7.98	17.24	2.7255	1.0323	9.29	18.50
Sep	2.1925	2.7062	0.3207	10.28	17.59	2.1925	0.9773	8.80	16.17
Oct	1.8252	2.8761	0.3360	10.90	16.91	1.8252	0.9116	8.20	14.30
Nov	1.7061	3.0143	0.3859	11.62	17.18	1.7061	0.9124	8.21	13.89
Dec	1.5761	2.4563	0.4352	10.72	15.86	1.5761	0.9057	8.42	13.64
Jan 2026	1.4525	2.1768	0.4448	9.85	14.59	1.4525	0.9433	8.77	13.55
Feb	1.7794	1.9373	0.4391	9.03	14.94	1.7794	1.1220	10.43	16.29
Mar	2.0220	2.0905	0.4178	9.41	16.16	2.0220	1.3215	12.29	18.94
Apr	1.8692	2.5190	0.3888	10.65	16.82	1.8692	1.5241	14.17	20.22
May	1.7001	2.7477	0.3840	11.37	16.92	1.8232	1.8232	16.96	22.32

Producer Prices

Month/Year	Producer Price Differential	Statistical Uniform Price (at 3.50%)	Butterfat Price	Protein Price	Other Solids Price	SCC Adjustment Rate	Producer Mailbox Price (at test)
	<i>\$ per cwt.</i>	<i>\$ per cwt.</i>	<i>\$ per lb.</i>	<i>\$ per lb.</i>	<i>\$ per lb.</i>	<i>\$ per cwt.</i>	<i>\$ per cwt.</i>
	Mar 2025	0.20	18.82	2.6242	2.4606	0.3647	0.00091
Apr	0.27	17.75	2.6406	2.1682	0.3087	0.00087	20.40
May	0.07	18.64	2.6627	2.4810	0.3222	0.00092	21.10
Jun	0.28	19.10	2.7378	2.5328	0.2914	0.00097	21.11
Jul	0.63	17.95	2.8435	1.8730	0.3092	0.00088	19.60
Aug	0.58	17.82	2.7255	1.9646	0.3204	0.00088	19.40
Sep	0.35	17.94	2.1925	2.7062	0.3207	0.00090	19.74
Oct	0.14	17.05	1.8252	2.8761	0.3360	0.00087	19.25
Nov	(0.56)	16.62	1.7061	3.0143	0.3859	0.00087	19.79
Dec	0.35	16.21	1.5761	2.4563	0.4352	0.00076	19.24
Jan 2026	0.46	15.05	1.4525	2.1768	0.4448	0.00070	17.15
Feb	0.58	15.52	1.7794	1.9373	0.4391	0.00072	17.64
Mar	0.50	16.66	2.0220	2.0905	0.4178	0.00078	18.75
Apr	0.61	17.43	1.8692	2.5190	0.3888	0.00082	
May	0.69	17.61	1.7001	2.7477	0.3840	0.00083	

Summary of Federal Order Data - May 2026

Federal Order Number / Name	Producer Deliveries	Class I Producer Receipts	Class I Utilization	Class I Price	Producer Price Differential	Uniform or Statistical Uniform Price at 3.5% Butterfat		
						FOB Market**	FOB Cook Cty. Illinois**	Change From Previous Year
	Thousand Pounds		Percent		Dollars per Cwt.	Dollars per Cwt.		
1 Northeast	2,391,593	653,575	27.3	\$ 24.25	\$4.42	\$ 21.34	\$ 19.44	\$1.75
5 Appalachian	425,353	286,455	67.3	24.75	n/a	24.02	21.62	3.04
6 Florida	194,011	157,841	81.4	25.95	n/a	25.45	21.85	2.55
7 Southeast	316,635	213,973	67.6	24.95	n/a	24.31	21.71	2.95
30 Upper Midwest	2,669,244	157,918	5.9	22.35	0.69	17.61	17.61	(1.03)
32 Central	1,292,226	328,288	25.4	22.35	2.70	19.62	19.62	1.21
33 Mideast	1,589,631	559,323	35.2	22.95	3.01	19.93	19.33	1.13
51 California	1,889,927	385,080	20.4	21.95	1.84	18.76	19.16	0.12
124 Pacific Northwest	398,625	64,561	16.2	21.85	1.44	18.36	18.86	(0.13)
126 Southwest	1,283,088	315,344	24.6	22.85	2.45	19.37	18.87	0.21
131 Arizona	386,257	97,895	25.3	21.75	n/a	20.76	21.36	1.59

All Market Average or Total * 12,836,590 3,220,253 25.1

n/a = Not applicable. * May not add due to rounding. **Use new base zone values listed in the [new Class I Differentials](#) effective June 1, 2025.

In accordance with Federal civil rights law and U.S. Department of Agriculture (USDA) civil rights regulations and policies, the USDA, its Agencies, offices, and employees, and institutions participating in or administering USDA programs are prohibited from discriminating based on race, color, national origin, religion, sex, disability, age, marital status, family/parental status, income derived from a public assistance program, political beliefs, or reprisal or retaliation for prior civil rights activity, in any program or activity conducted or funded by USDA (not all bases apply to all programs). Remedies and complaint filing deadlines vary by program or incident.

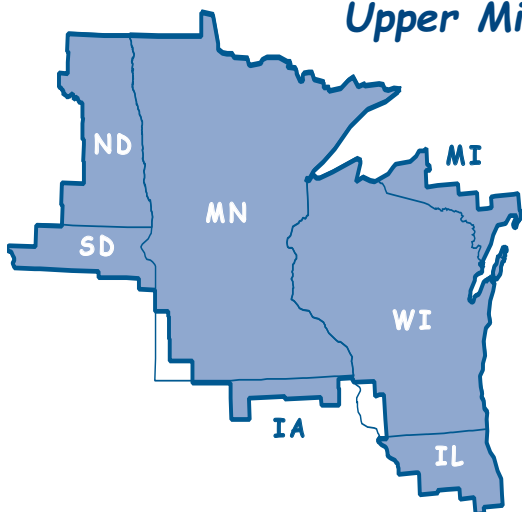
Persons with disabilities who require alternative means of communication for program information (e.g., Braille, large print, audiotape, American Sign Language, etc.) should contact the responsible Agency or USDA's TARGET Center at (202) 720-2600 (voice and TTY) or contact USDA through the Federal Relay Service at 711. Additionally, program information may be made available in languages other than English.

To file a program discrimination complaint, complete the USDA Program Discrimination Complaint Form, AD-3027, found online at [How to File a Program Discrimination Complaint](#) and at any USDA office or write a letter addressed to USDA and provide in the letter all of the information requested in the form. To request a copy of the complaint form, call (866) 632-9992. Submit your completed form or letter to USDA by: (1) mail: U.S. Department of Agriculture, Office of the Assistant Secretary for Civil Rights, 1400 Independence Avenue, SW, Washington, D.C. 20250-9410; (2) fax: (202) 690-7442; or (3) email: program.intake@usda.gov.

USDA is an equal opportunity provider, employer, and lender.

Upper Midwest Marketing Area

F.O. 30



Phone: (952) 831-5292

Fax: (952) 831-8249

Website: www.fmma30.com



Image by pikisuperstar on Freepik